

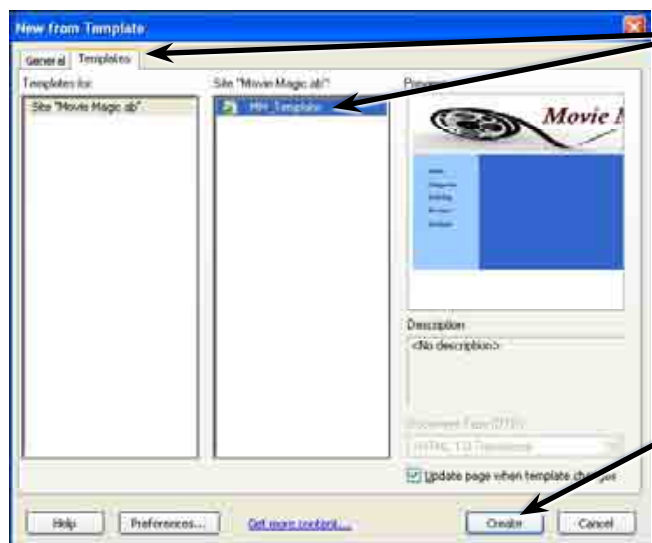
Anchor Links

There are times when you may have a long page of text and/or images that won't fit on the screen. You can provide links within the page so that the user can quickly skip from section to section. This is achieved by setting ANCHOR points then setting links to those points.

A page with two screens of text has been prepared for you. It needs ANCHOR POINTS inserted.

Starting a New Page

- 1 Load DreamWeaver or close the current pages.
- 2 Display the FILE menu and NEW.

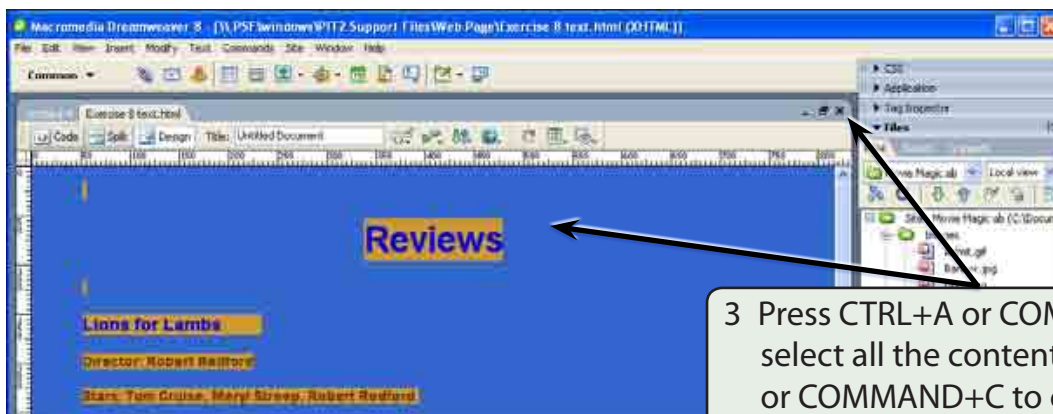


3 Click on the TEMPLATES tab at the top of the NEW DOCUMENT dialogue box and your MM_TEMPLATE should be highlighted, if not, select it.

4 Click on CREATE to open a page which will be set to the template.

Importing the Prepared Page

- 1 Display the FILE menu and select OPEN.
- 2 Access the PIT2 SUPPORT FILES, open the WEB PAGE folder and load the EXERCISE 8 TEXT.HTML page.



3 Press CTRL+A or COMMAND+A to select all the content, press CTRL+C or COMMAND+C to copy it, then close the page.



4 Click in the CONTENT cell, and press CTRL+V or COMMAND+V to paste the content in.

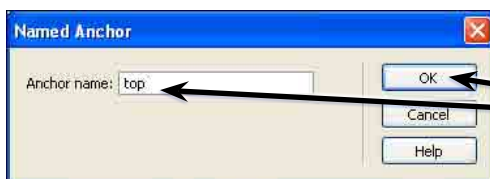
5 Save the page in your MOVIE_MAGIC folder as REVIEWS or REVIEWS.HTML.

Setting the Anchor Points

Users need to be able to jump from one section of the page to another. Anchor points need to be placed at significant points to allow this to occur. You need to think carefully where you place these anchors, remembering that not all internet users have the same sized monitors. Blank lines can be added to the document to make the sections more clearly defined.



1 Position the cursor at the blank line above the REVIEWS heading then click on the NAMED ANCHOR button in the COMMON panel of the INSERT BAR.

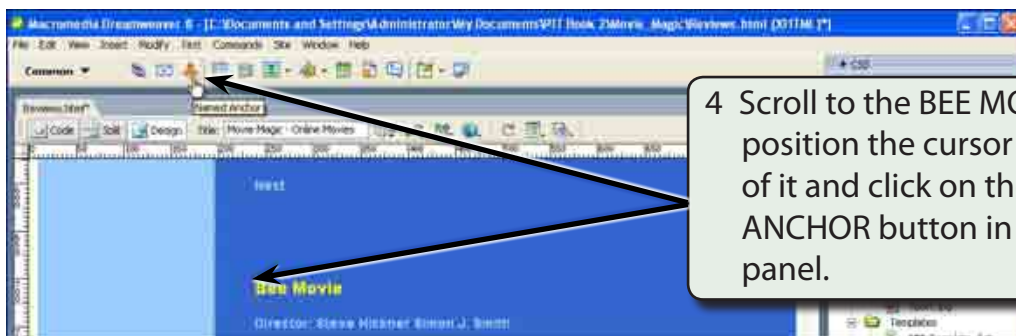


2 In the NAMED ANCHOR dialogue box call the anchor:
top
this will allow a link to be set back to the top of the page, then select OK.

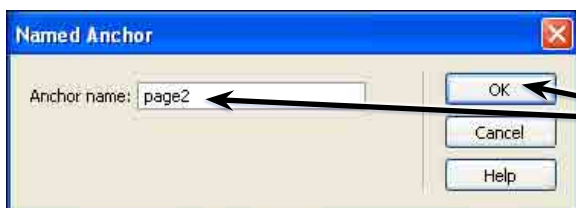


3 An ANCHOR symbol will be added next to the text.

NOTE: The anchor symbol will not be displayed in the browser and it can be turned off using VIEW menu - VISUAL AIDS - INVISIBLE ELEMENTS. However, it is probably better to know where you have set anchor points.



4 Scroll to the BEE MOVIE heading, position the cursor at the beginning of it and click on the NAMED ANCHOR button in the COMMON panel.

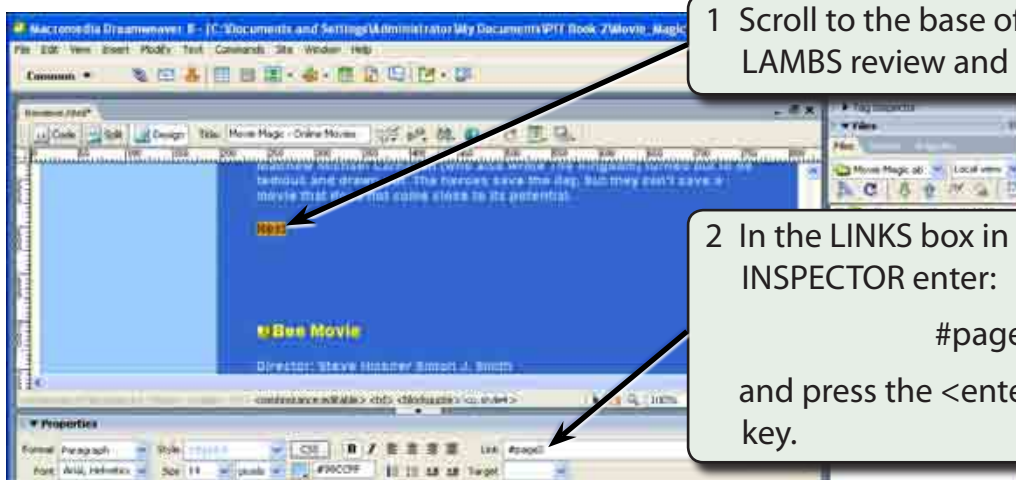


5 Call the anchor: page2 and select OK.

NOTE: The ANCHOR NAME must be one word and they are case sensitive so it is best to use lower case letters for their names.

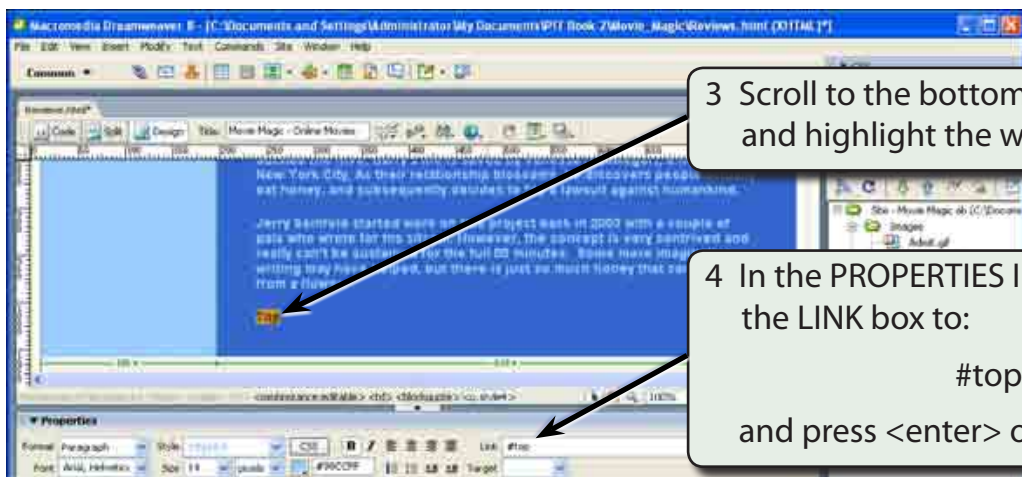
Setting the Anchor Links

Links can now be provided to the anchor points.



1 Scroll to the base of the LIONS FOR LAMBS review and highlight NEXT.

2 In the LINKS box in the PROPERTIES INSPECTOR enter: #page2 and press the <enter> or <return> key.



3 Scroll to the bottom of the reviews and highlight the word: Top

4 In the PROPERTIES INSPECTOR set the LINK box to:

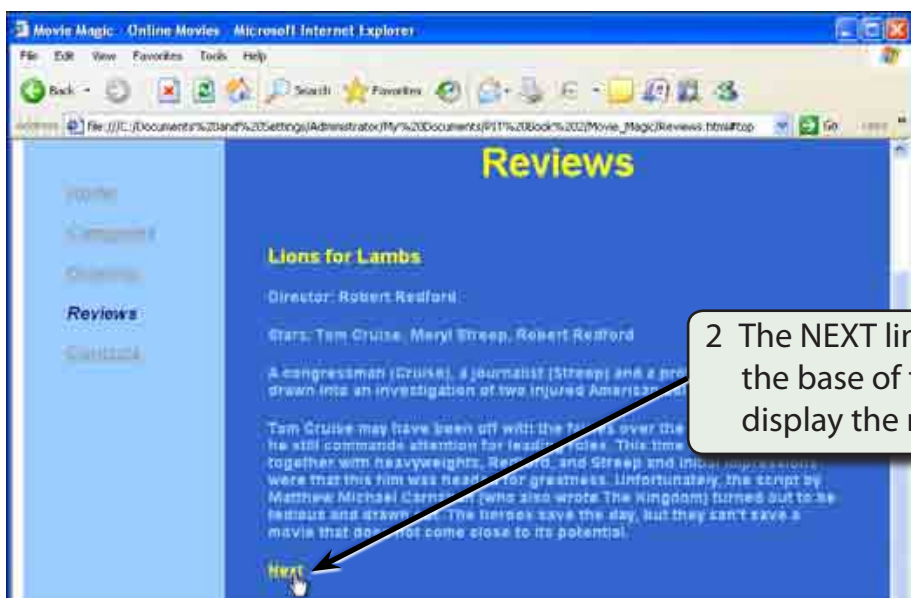
#top

and press <enter> or <return>.

NOTE: Link names are case sensitive. So 'Top' is considered different to 'top'. Be careful to set the link to exactly the same as its anchor point.

Testing the Anchor Links

- 1 Save the page and preview it in a browser.



2 The NEXT link should be displayed at the base of the screen. Click on it to display the next page.