

Learning VectorWorks Chapter 7

Using Layers

Layers are very important part of any CAD program. They are screen overlays that different objects can be placed into. Think of them as sheets of transparent paper stacked on top of each other.

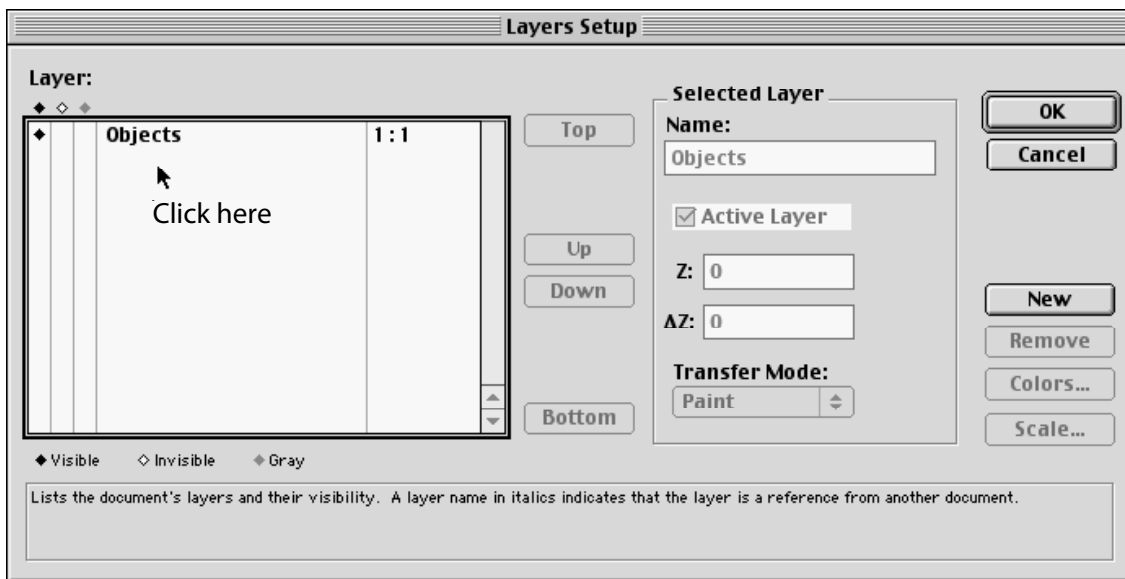
Layers allow you to keep groups of objects separate in the one drawing. For example, you can place a drawing in one layer and its dimensions in the second layer. This would allow you to print the drawing with or without dimensions. Another example might be placing the plumbing, electrical, and air conditioning systems each in their own separate layers within the design drawing of a house plan, then print just print each layer for the plumber, electrician and air conditioner installer when the house is being built.

You can hide all but the layer you wish to work in and then display or print any combination of them.

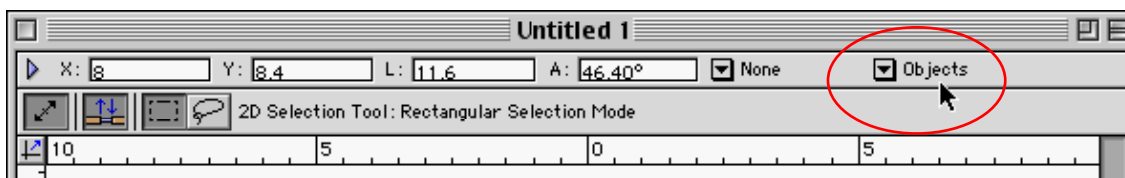
Naming a Layer

When you start a new VectorWorks document LAYER-1 is opened and all objects are placed in that layer until you create a new layer or open a layer that you have previously created. When creating a document that is going to contain layers it is best to rename the first layer so that you know what objects it will contain.

- 1 Load VectorWorks, or close the current file then select NEW from the FILE menu and select CREATE BLANK DOCUMENT followed by OK.
- 2 Set the units to CENTIMETRES using UNITS from the PAGE menu.
- 3 Display the ORGANISE menu and select LAYERS. You will receive the LAYOUT SETUP dialogue box with LAYER-1 selected.
- 4 To rename the enter the name: OBJECTS in the NAME box then click in the window under the LAYER heading. Refer to the diagram at the top of the next page.



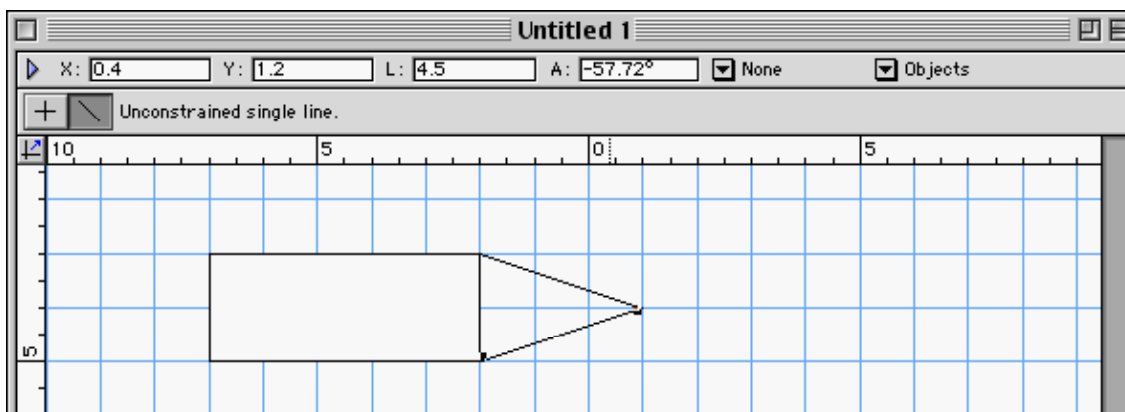
- 5 Select OK to return to the document and the layer name is displayed in the STATUS bar. This is the LAYERS POP-UP MENU.



Creating a Simple Drawing

To illustrate the use of layers let's create a simple shape in one layer and add dimensions to the shape in a second layer.

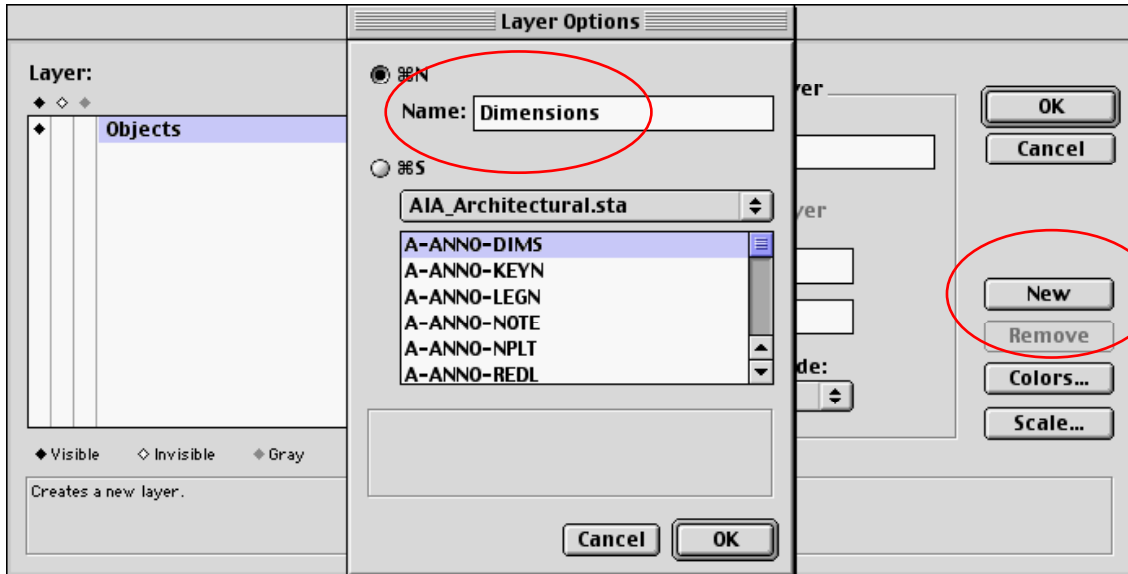
The object will be placed in the OBJECTS layer that you just named. Create the following shape.



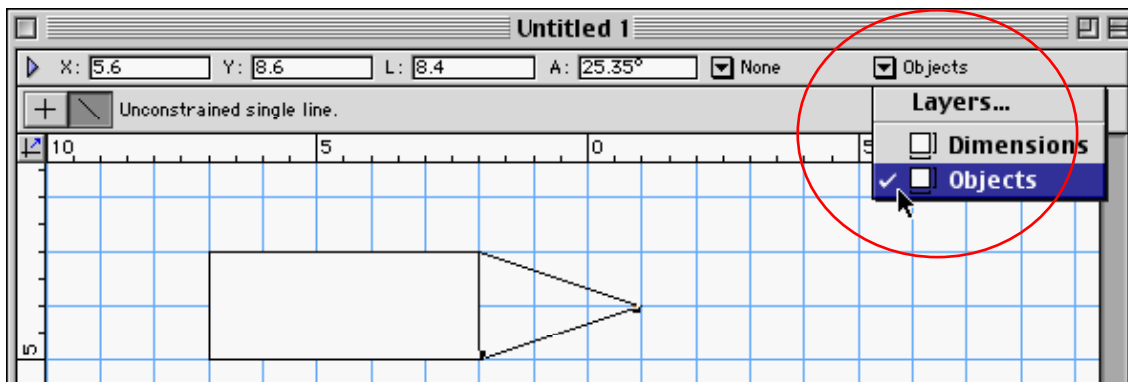
Adding a New Layer

Dimensions will be added to the object and placed in a separate layer.

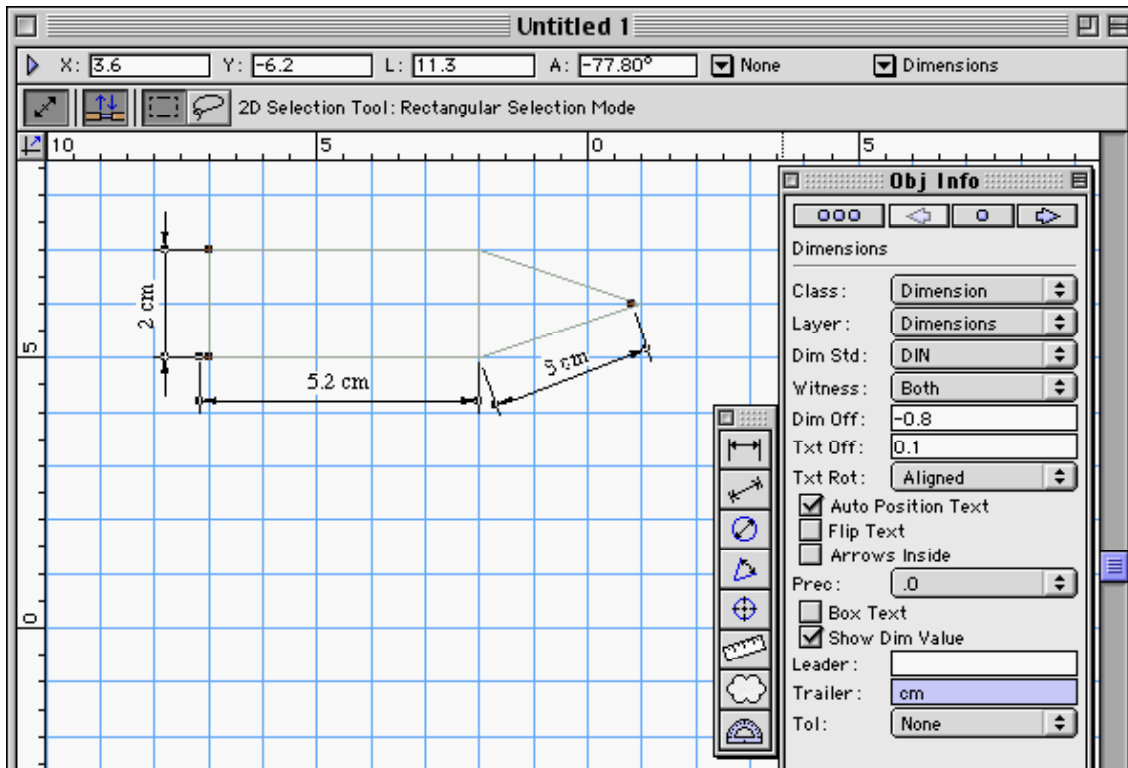
- 1 Display the ORGANISE menu and select LAYERS to display the LAYERS SETUP dialogue box.
- 2 Click on the NEW button and enter the layer name: Dimensions.



- 3 Select OK to create the layer.
- 4 Click on OK again to return to the document and notice that the object is dimmed to indicate that it is in the layer below the DIMENSIONS layer.
- 5 Click on the arrow next to the DIMENSIONS label in the STATUS BAR to display the LAYERS POP-UP MENU and the two layers should be displayed.
- 6 Select OBJECTS to bring that layer to the front and its lines should be back to solid.



- 7 Use the LAYERS POP-UP MENU to return the DIMENSIONS LAYER to be active (or at the front of the screen).
- 8 Use the DIMENSIONS and OBJECT INFO palettes to add the following dimensions to the object. They will be placed in the DIMENSIONS layer as you have made that layer active.



- 9 Close the DIMENSIONS and OBJECT INFO palettes.
- 10 Use the LAYERS POP-UP MENU to return the OBJECTS layer to be active and the DIMENSIONS should be greyed.

