

# Drawing and Painting Tools

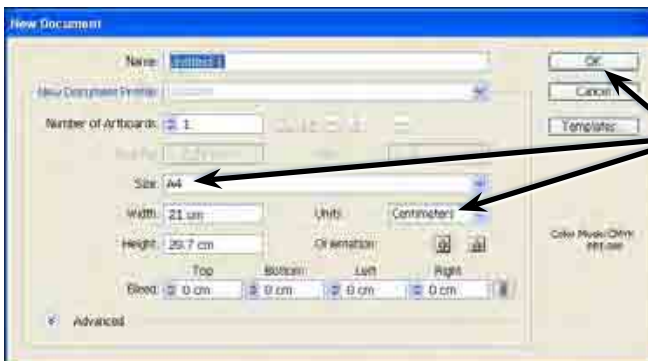
There are a range of drawing and painting tools that Adobe Illustrator provides. In this chapter we will look at the use of the PENCIL TOOL, the ERASER TOOL, the SMOOTH TOOL, the PAINTBRUSH TOOL and the LIVE PAINT BUCKET.

When you create drawings in Illustrator you create a series of PATHS. A path is made up of one or more straight or curved lines, which can be closed (for example, a rectangle) or open with end points (called anchor points) at each end.

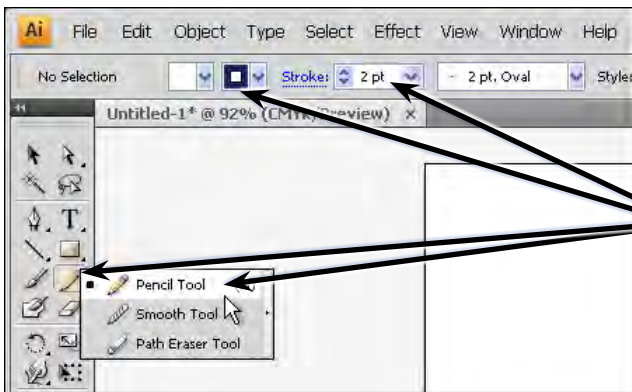
## The Pencil Tool

The PENCIL TOOL lets you draw freely on the ARTBOARD. Anchor points are added to the paths that you draw.

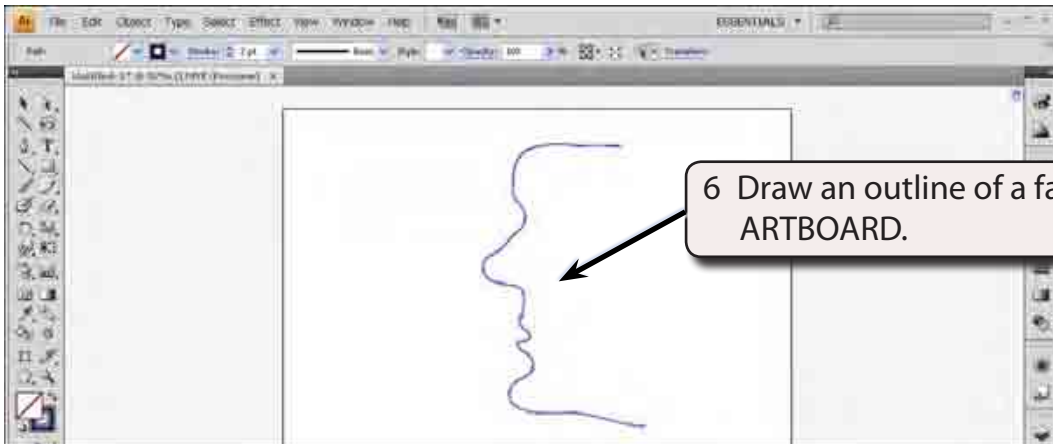
- 1 Load Adobe Illustrator CS4 or close the current document.
- 2 In the CREATE NEW section of the WELCOME screen click on PRINT DOCUMENT to start a new document.
- 3 The PRINT DOCUMENT option will ask you for the settings of the printer you will be printing to.



4 Set the SIZE to A4 (or the paper size your printer uses), the UNITS to CENTIMETRES and select OK.



5 Select the PENCIL TOOL from the TOOLS panel and, in the OPTIONS panel, set the STROKE to 2 pt and select a STROKE COLOUR.



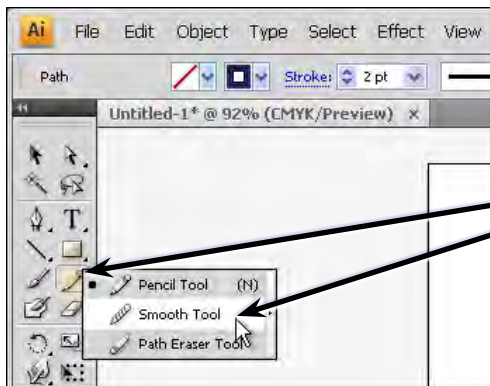
6 Draw an outline of a face on the ARTBOARD.

**NOTE:**

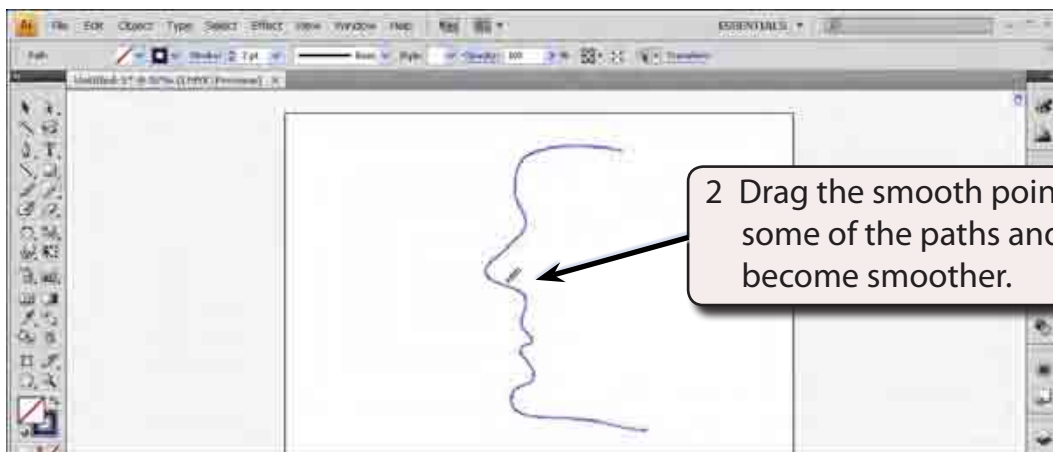
- i The outline does not need to be accurate. We will use the SMOOTH and ERASER TOOLS shortly to improve it.
- ii Notice that a series of anchor points have been added to the paths. These anchor points can be clicked on using the DIRECT SELECTION TOOL and moved if need be.

## The Smooth Tool

The SMOOTH TOOL allows you to smooth the paths so that the curves are more accurate.



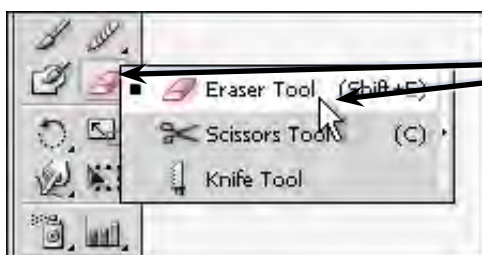
1 Select the SMOOTH TOOL from within the PENCIL TOOL in the TOOLS panel.



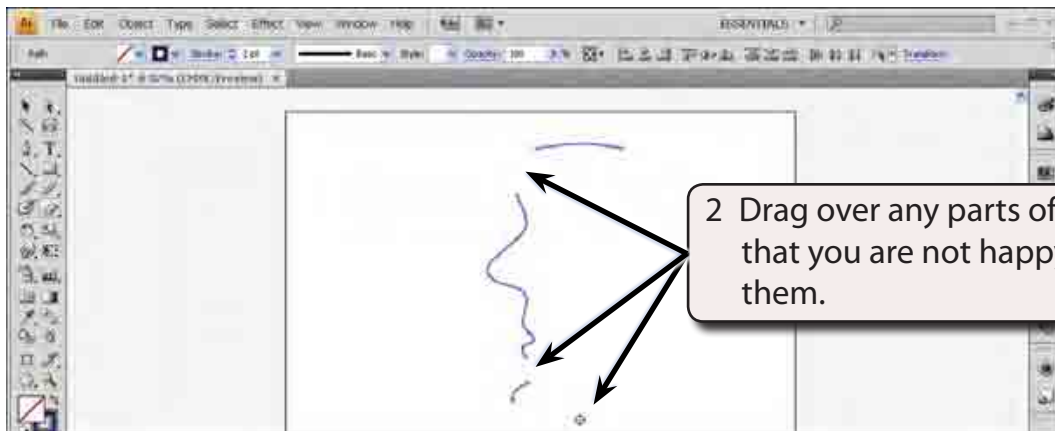
2 Drag the smooth pointer over some of the paths and they should become smoother.

## The Eraser Tool

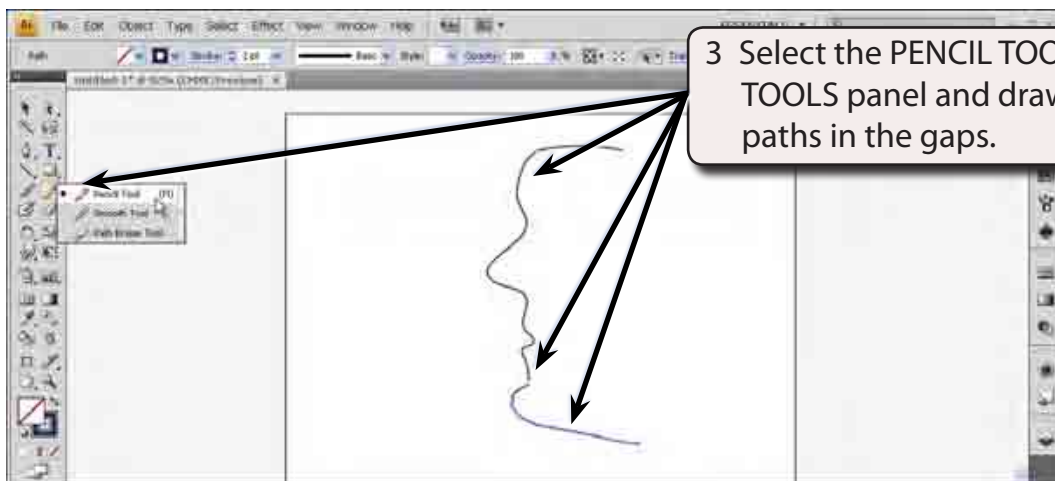
The ERASER TOOL can be used to remove any parts of paths that are not correct.



1 Select the ERASER TOOL from the TOOLS panel.

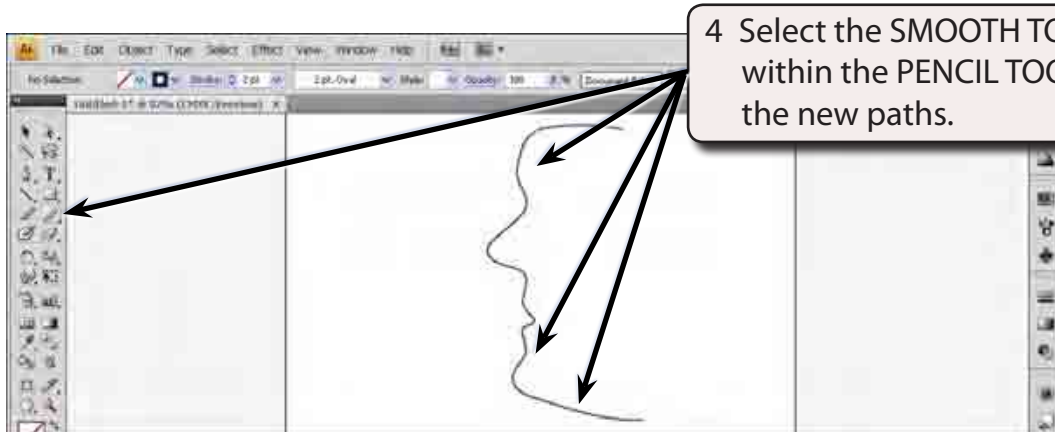


2 Drag over any parts of the outline that you are not happy with to erase them.



3 Select the PENCIL TOOL from the TOOLS panel and draw replacement paths in the gaps.

**NOTE:** You can zoom the screen by pressing **CTRL+** or **COMMAND+** to ensure that the paths meet, then **CTRL+0** or **COMMAND+0** to return the view to **FIT ARTBOARD IN WINDOW**.



4 Select the SMOOTH TOOL from within the PENCIL TOOL and smooth the new paths.