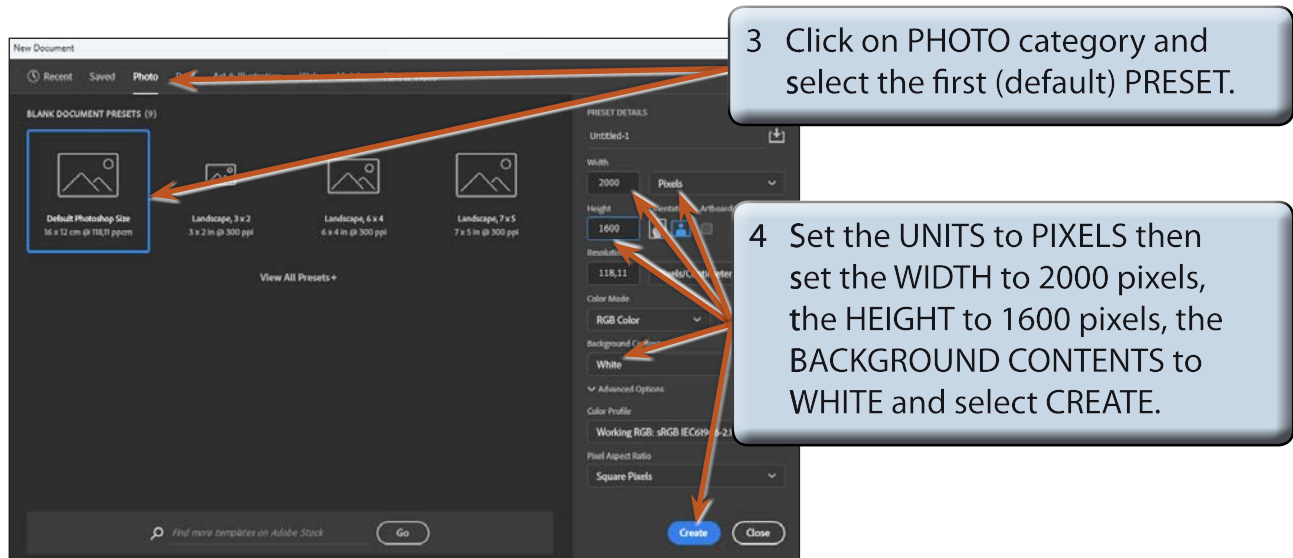


Drawing Shapes

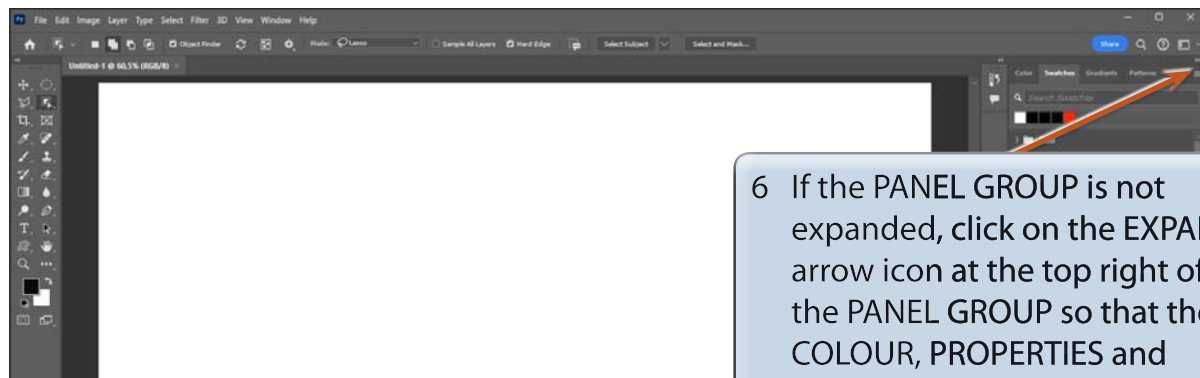
Photoshop provides a range of shapes that can be used with photos or in the creation of your own designs. These tools allow you to create borders for photos, company logos, artistic designs, web page buttons and so on.

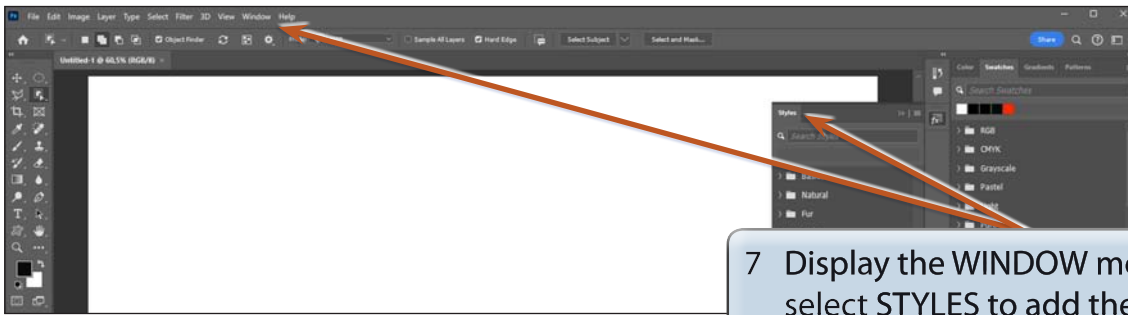
Starting a Blank Document

- 1 Load Photoshop or close the current file.
- 2 Click on the NEW FILE button in the WELCOME screen or select NEW from the FILE menu.



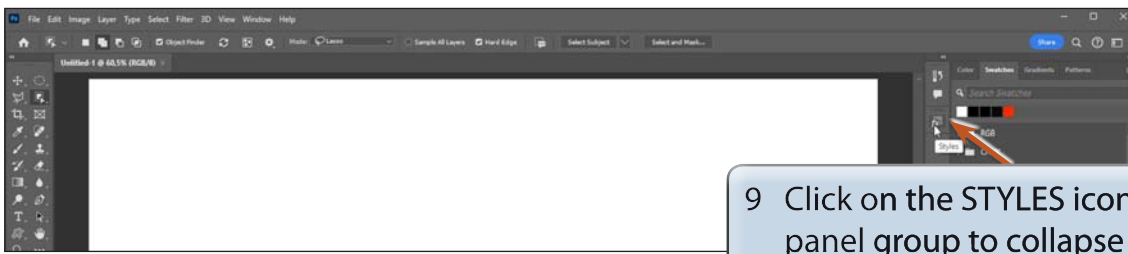
- 5 Set the view to FIT ON SCREEN by pressing **CTRL+0** or **COMMAND+0**.





7 Display the WINDOW menu and select STYLES to add the STYLES panel to the panel group.

8 The STYLES panel will be used to add styles to shapes.



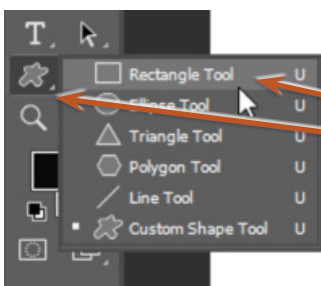
9 Click on the STYLES icon in the panel group to collapse it for now.

Drawing Normal Shapes

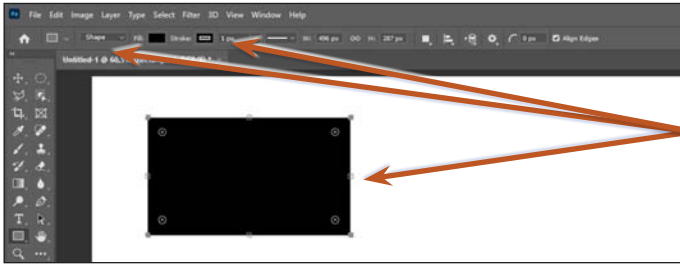
Photoshop provides the normal drawing shapes such as rectangles, ellipses, triangles, polygons and lines.

A Drawing Rectangles

1 The SHAPES TOOL is at the lower section of the TOOLS panel. It may contain a rectangle, ellipse, line or custom shape depending on which tool was used last.

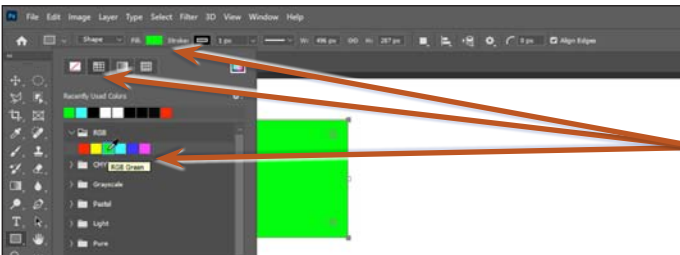


2 Click and hold the mouse button on the SHAPES TOOL in the TOOLS panel and select the RECTANGLE TOOL from the pop-up list of tools.



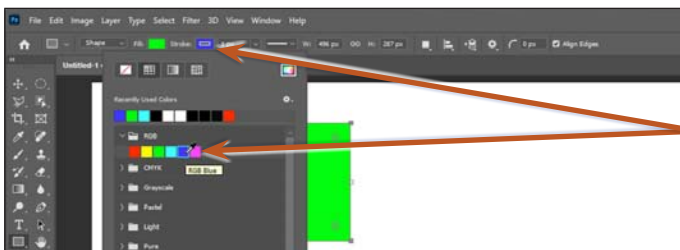
3 In the OPTIONS BAR check that the PICK TOOL MODE box is set to SHAPE, drag a rectangle on the canvas and it will be filled with the FILL colour displayed in the OPTIONS BAR and have a border colour displayed in the STROKE box.

NOTE: When the PICK TOOL MODE box is set to SHAPE a new layer is created each time a shape is drawn. PATH is selected when you want an unfilled outline of the shape and PIXELS allows you to draw over a current shape or in a current layer.

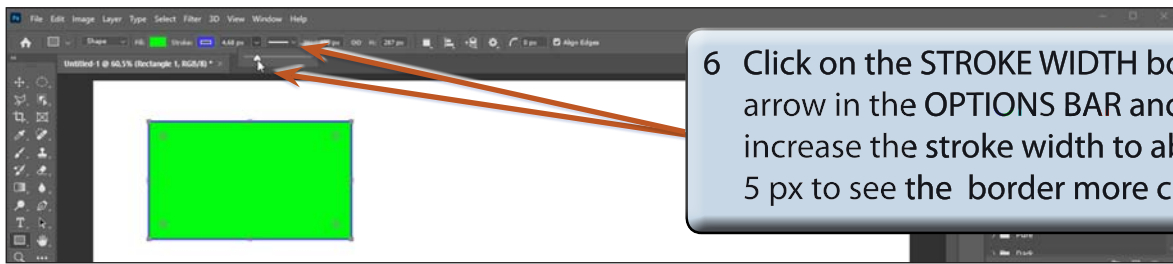


4 Click on the FILL box in the OPTIONS BAR, select the SOLID COLOUR icon, expand the RGB folder, select a colour in the palette and the rectangle will be filled with the new colour.

NOTE: There are SOLID COLOUR, GRADIENT, PATTERN and COLOUR PICKER boxes at the top of the FILL palette that can be used to apply different types of fills. The NO COLOUR box at the top left removes the fill and makes the shape transparent.



5 Click on the STROKE box in the OPTIONS BAR, expand the RGB folder and select a different colour for the border of the rectangle.



NOTE:

- i There are more options at the base of the STROKE TYPE palette that allow you to control the border appearance.
- ii The W and H boxes in the OPTIONS BAR allow you to accurately set the dimensions of the shape.

8 The PROPERTIES panel can also be used to adjust the rectangle's appearance.

