

Removing Objects From Images

There are more tools that Photoshop provides to remove objects from photos. Two of these are the CLONE STAMP TOOL and the CONTENT AWARE FILL option.

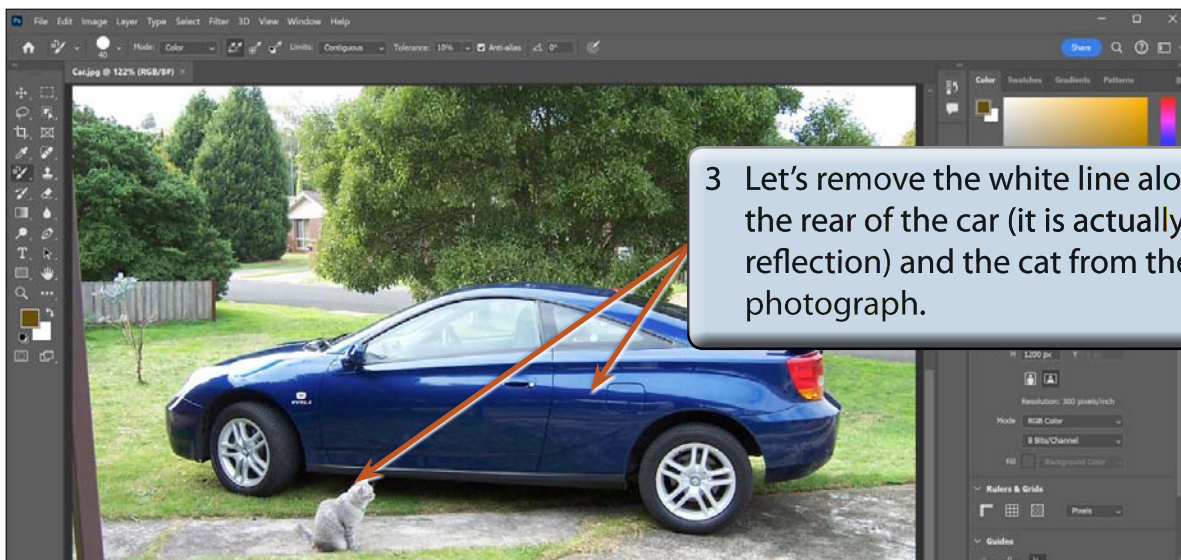
The Clone Stamp Tool

The CLONE STAMP TOOL is probably a little more accurate than the HEALING BRUSH or CONTENT AWARE MOVE TOOLS when removing objects from photos, but it does take a little more practice to master. To illustrate how to use the CLONE STAMP TOOL we will repair the same photograph of a car that you used in the last chapter.

A Loading the Image

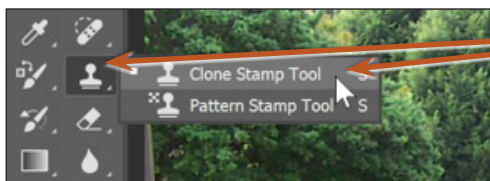
- 1 Load Photoshop or close the current file then select OPEN from the WELCOME screen or FILE menu.
- 2 Access the PS SUPPORT FILES, open the CHAPTER 16 folder and open the file:

Car



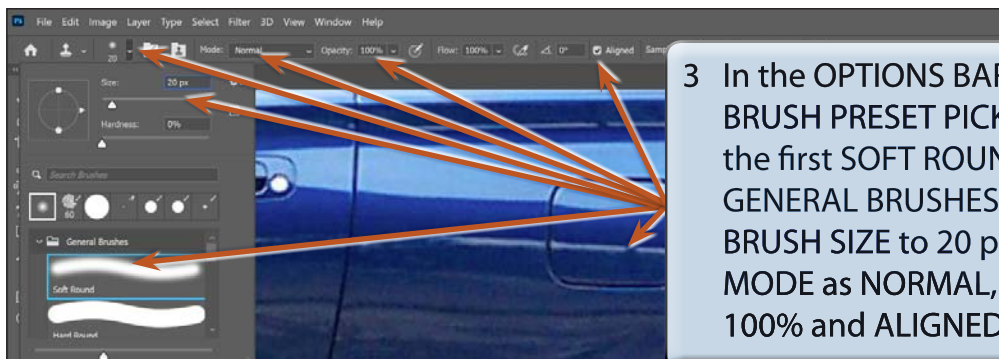
B The Clone Stamp Settings

There are a number of settings that can be applied to the CLONE STAMP TOOL to make the cloning process more efficient.



1 Select the CLONE STAMP TOOL from the TOOLS panel.

2 Set the ZOOM to 400% and scroll to the fuel tank cover near the rear of the car.

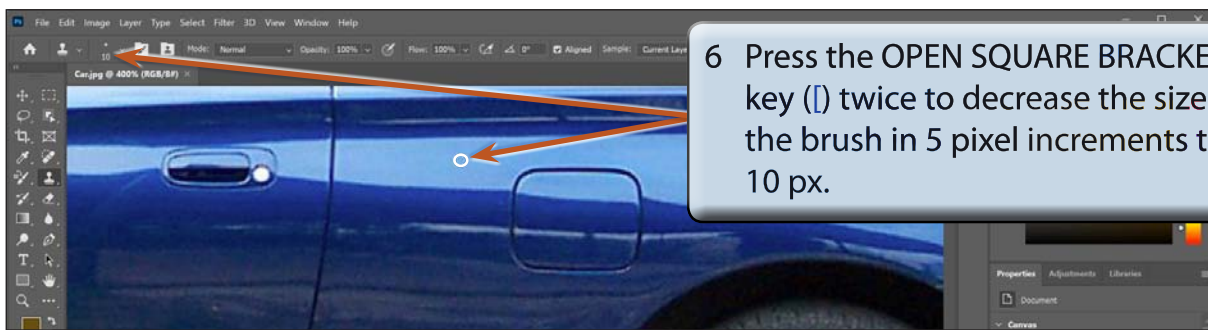


3 In the OPTIONS BAR, click on the BRUSH PRESET PICKER arrow, select the first SOFT ROUND brush from the GENERAL BRUSHES folder, set the BRUSH SIZE to 20 pixels, leave the MODE as NORMAL, the OPACITY at 100% and ALIGNED should be ticked.

4 Click on the BRUSH PRESET PICKER arrow in the OPTIONS BAR to close the BRUSHES panel if it is still open.

NOTE: Some people prefer to clone with the OPACITY (or colour strength) set to 50% and build the clone up gradually. We will use 100% here, but you might like to experiment will 50% once you are familiar with the cloning process.

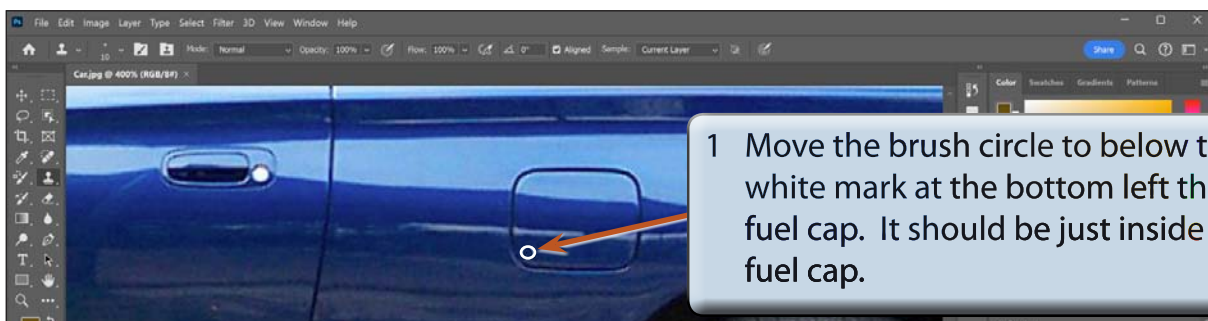
5 You can increase or decrease the BRUSH SIZE using keyboard shortcuts ([]).



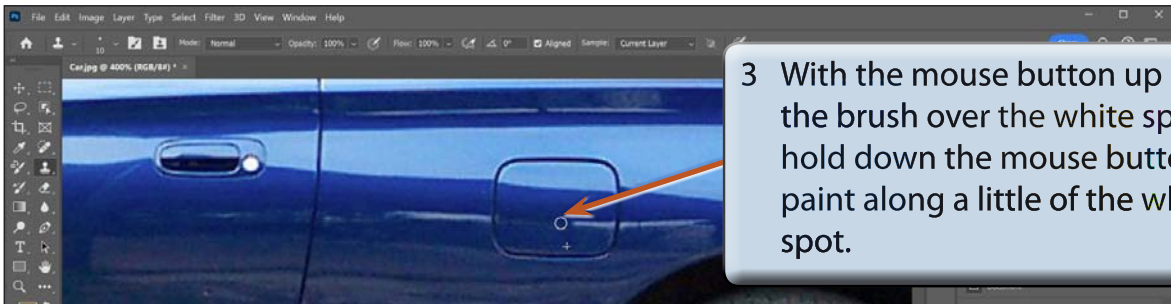
NOTE: You can use the CLOSE SQUARE BRACKET key (]) when you want to increase the size of the brush.

C Cloning

The cloning process involves selecting an area of an image that looks close to what the faulty area should look like, **ALT** or **OPTION** clicking to select that area, then painting over the problem area.



- 2 Hold down the **ALT** or **OPTION** key and click the mouse button to copy the sample area.



- NOTE:**
- i Notice that you have a circle brush shape and a cross-hair. The circle is the paint brush and the cross-hair is the sample area being copied.
 - ii As you paint along the problem area, the sampled area moves as well. This is what is meant by **ALIGNED**. If you wanted the sample area to remain from the original horizontal plane you would deselect **ALIGNED** in the **OPTIONS BAR**.
 - iii The **CLONED STAMP TOOL** was not designed to have lots of mouse clicks associated with it. The effect will not be realistic if you do this. You need to **ALT** or **OPTION** click once on a sample area and paint over the faulty part, then re-select a sample area when the cloning starts to look unrealistic.

