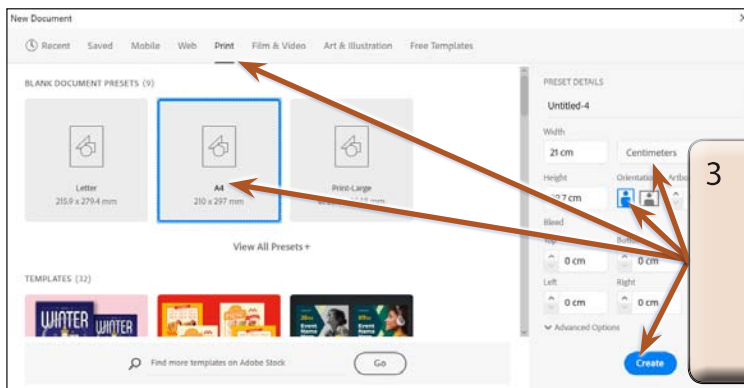


Using Envelopes

Envelopes can be used to distort or reshape selected objects. You can distort an object to be displayed within another shape (envelope) that you draw or you can apply warps and meshes within the shape.

Starting a New Document

- 1 Load Adobe Illustrator or close the current document.
- 2 Select NEW FILE from the WELCOME screen or NEW from the FILE menu to start a new document.



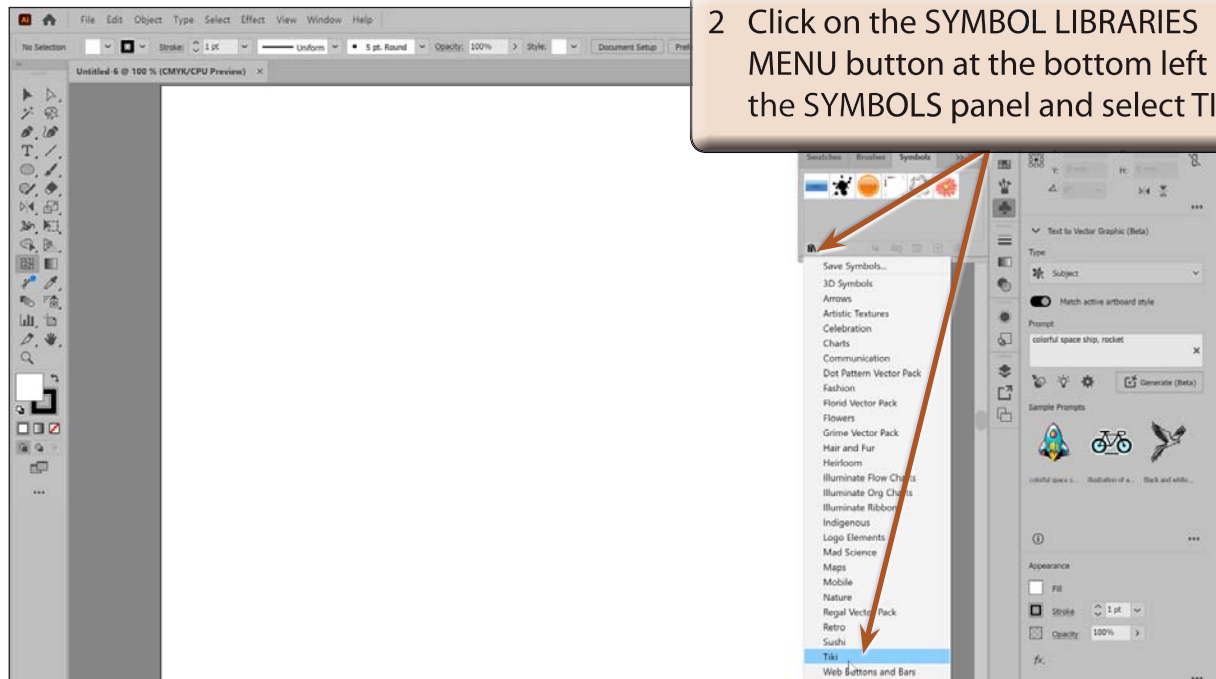
- 3 Select the PRINT profile followed by the A4 preset (or the paper size your printer uses), set the UNITS to CENTIMETRES, the ORIENTATION to PORTRAIT and select CREATE.

Making an Envelope

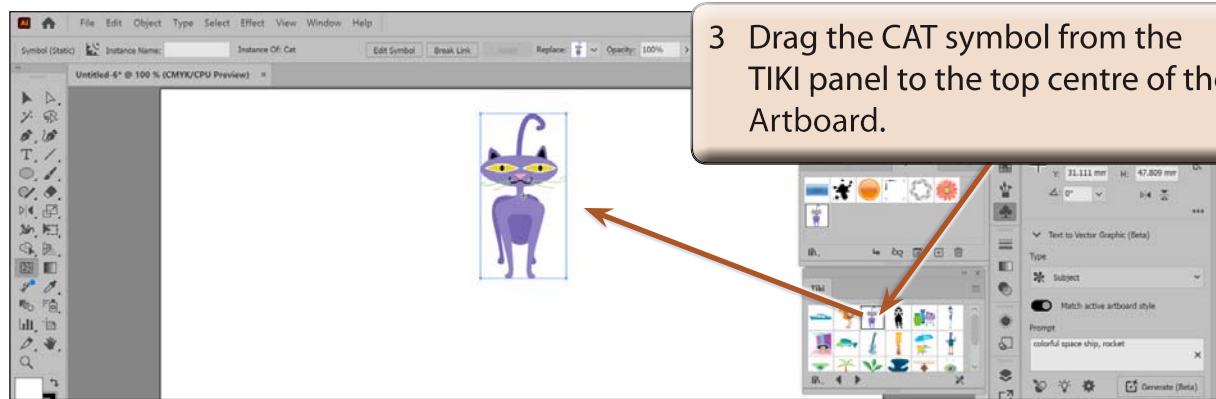
Let's set a symbol to be displayed in an irregular shape.

A Selecting the Symbol

- 1 Expand the SYMBOLS panel in the PANEL GROUP.



2 Click on the SYMBOL LIBRARIES MENU button at the bottom left of the SYMBOLS panel and select TIKI.

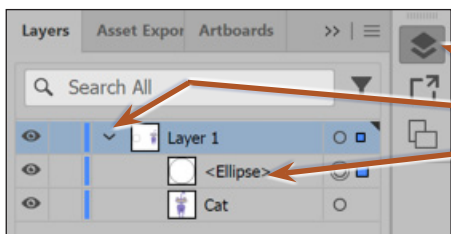
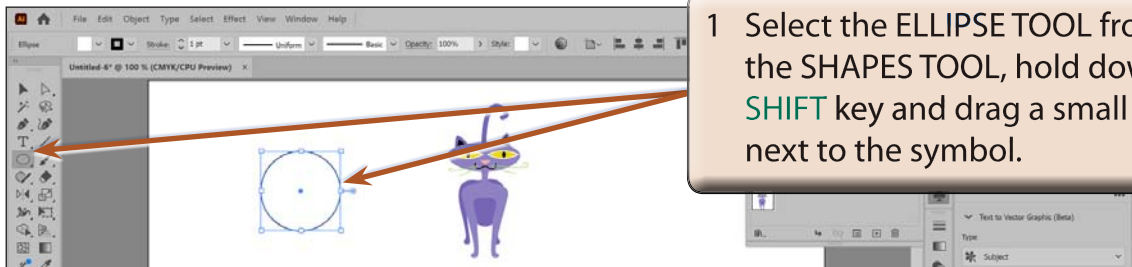


3 Drag the CAT symbol from the TIKI panel to the top centre of the Artboard.

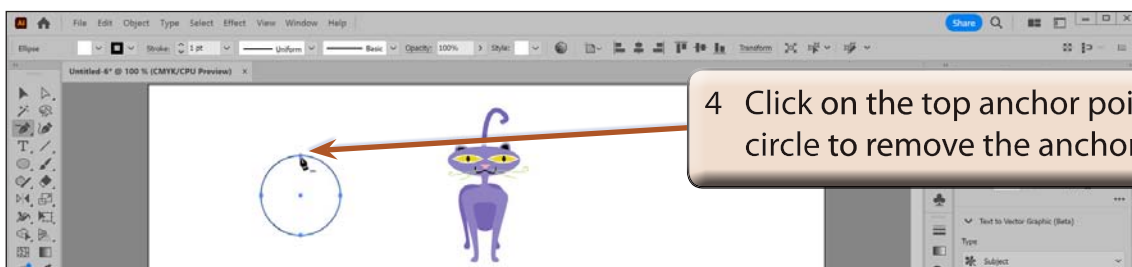
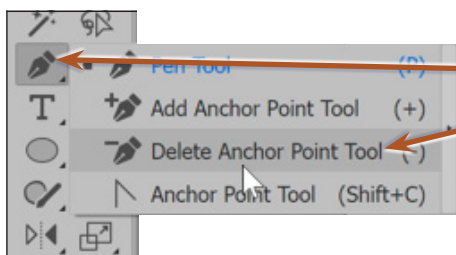
NOTE: The CAT symbol will be added to the SYMBOLS panel when you drag it on to the Artboard.

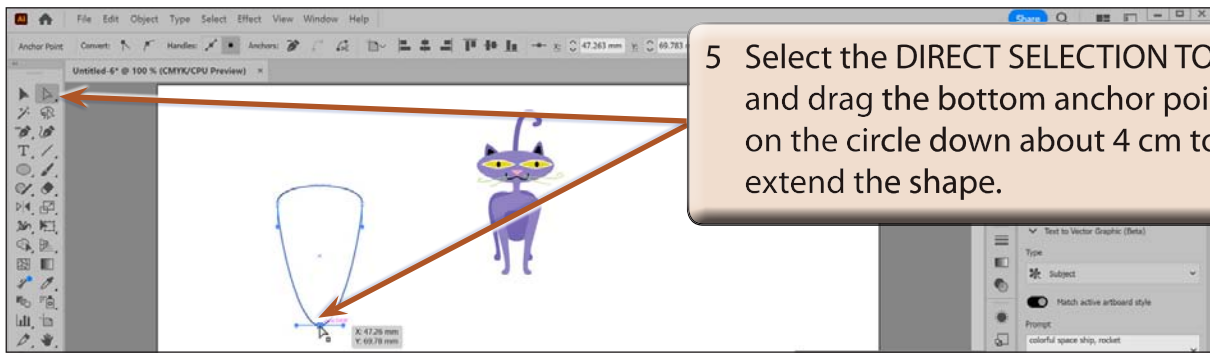
4 Close the TIKI panel.

B Drawing the Envelope Shape

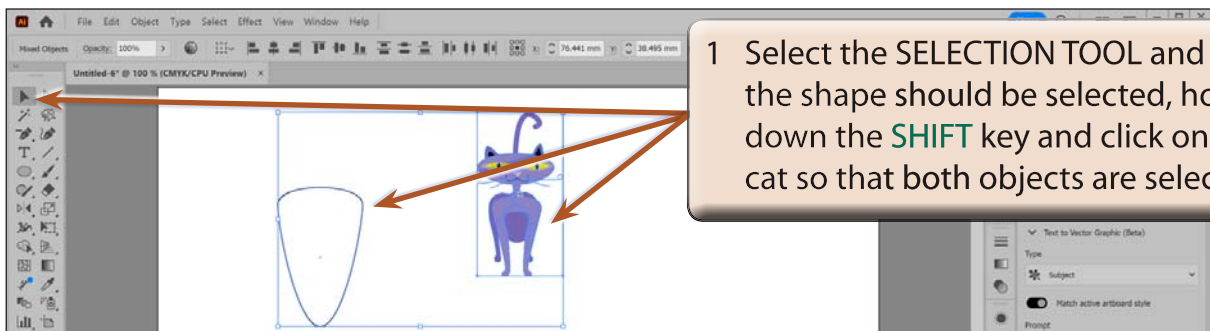


NOTE: The envelope shape must be above the shape to be distorted in the stacking order in the LAYERS panel for the envelope to be created. If it isn't, you can click on the ENVELOPE SHAPE and use the OBJECT menu - ARRANGE - BRING TO FRONT to move the shape to the top of the stacking order.





C Distorting the Symbol into the Shape



2 Display the OBJECT menu, highlight ENVELOPE DISTORT and select MAKE WITH TOP OBJECT.

