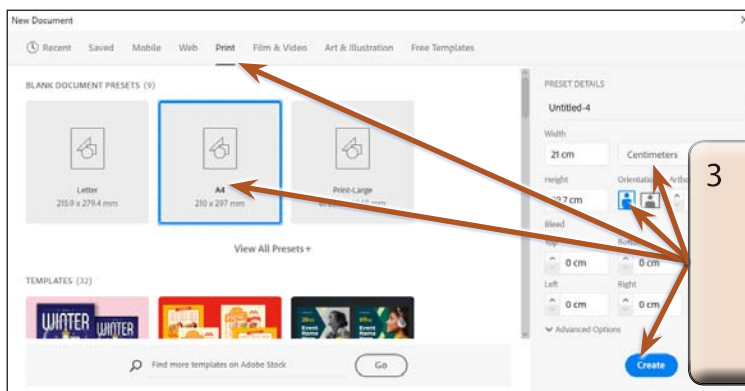


Text to Vector Graphic Generator

The TEXT TO VECTOR GRAPHIC GENERATOR within Adobe Illustrator provides you with suggested vector images based on text that you enter. Illustrator searches its library for images that match your entry. The feature is new and extra images are constantly being developed.

Starting a New Document

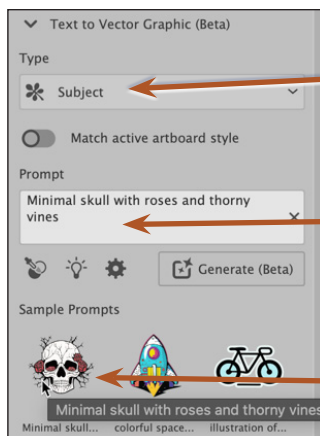
- 1 Load Adobe Illustrator or close the current document.
- 2 Select NEW FILE from the WELCOME screen or NEW from the FILE menu to start a new document.



- 3 Select the PRINT profile followed by the A4 preset (or the paper size your printer uses), set the UNITS to CENTIMETRES, the ORIENTATION to PORTRAIT and select CREATE.

Looking at the Properties Panel

The TEXT TO VECTOR GRAPHIC tools are in the PROPERTIES panel. There are 3 main areas.



The **TYPE** box where you can select from **Subject**, **Scene**, **Icon** or **Pattern**.

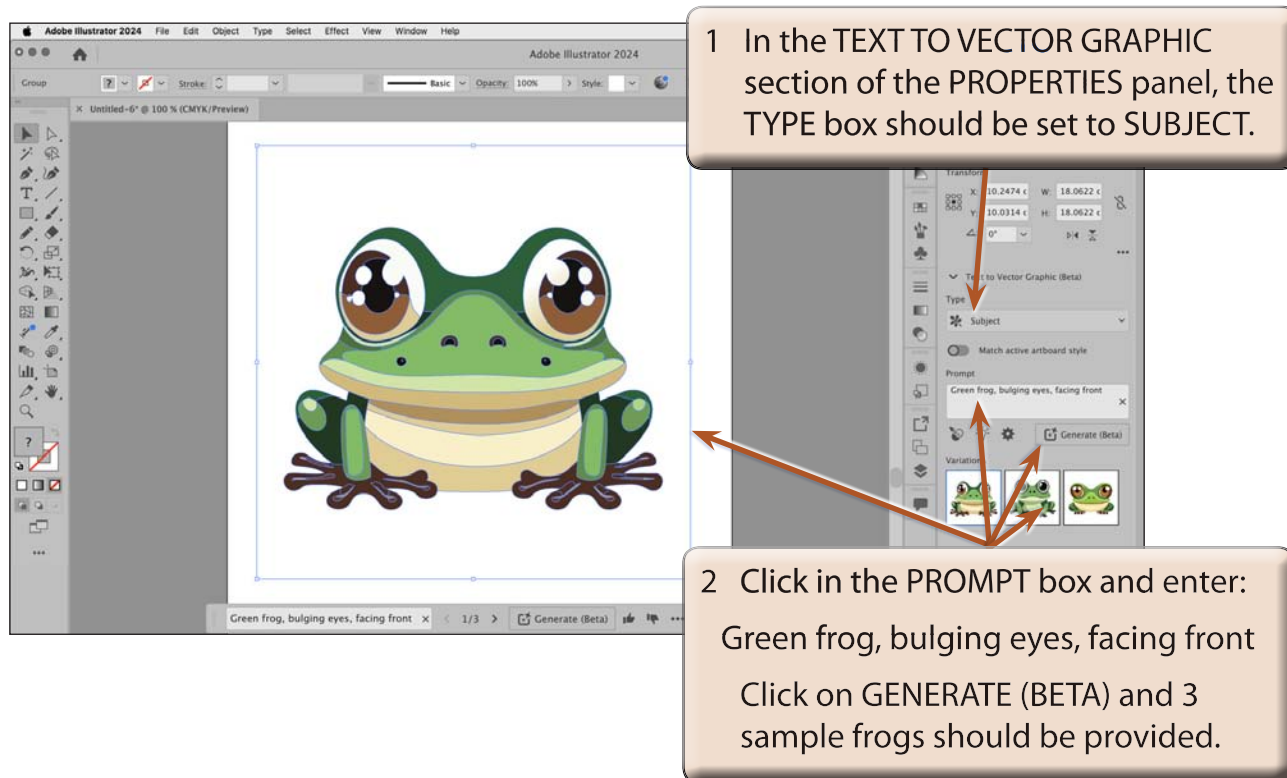
The **PROMPT** box where you enter the search text.

The **SAMPLE PROMPTS** where sample search text is provided.

Inserting Subject Images

Subject images are specific images such as animals, people, cars, trees, etc. The more specific you can be with the prompt text, the closer the image will be to what you require.

A Entering a Prompt



The screenshot shows the Adobe Illustrator 2024 interface. In the center, a green frog with large, bulging eyes is displayed within a blue selection box. To the right, the 'Text to Vector Graphic (Beta)' panel is open. The 'Type' dropdown is set to 'Subject'. The 'Prompt' field contains the text 'Green frog, bulging eyes, facing front'. Below the prompt, there are three small thumbnail images of the generated frog variations. A 'Generate (Beta)' button is visible. Two callout boxes provide instructions: the first points to the 'Type' dropdown, and the second points to the 'Prompt' field and the 'Generate (Beta)' button.

1 In the TEXT TO VECTOR GRAPHIC section of the PROPERTIES panel, the TYPE box should be set to SUBJECT.

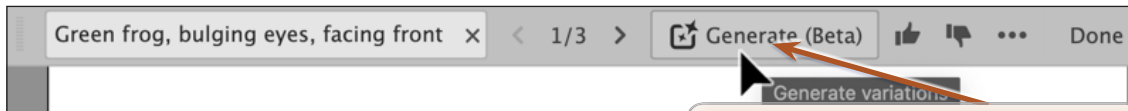
2 Click in the PROMPT box and enter:
Green frog, bulging eyes, facing front
Click on GENERATE (BETA) and 3 sample frogs should be provided.

NOTE: It can take a bit of time for the search to process the required vector images. It depends on the speed of your internet connection and the power of your computer system.

- 3 Click on each of the provided 3 frog variations and select the one you like the best.
- 4 The GENERATE CONTEXTUAL TASK BAR is added below the frog image. It has similar tools to those in the PROPERTIES panel and you can scroll through the variations using its FORWARD and BACK arrows.

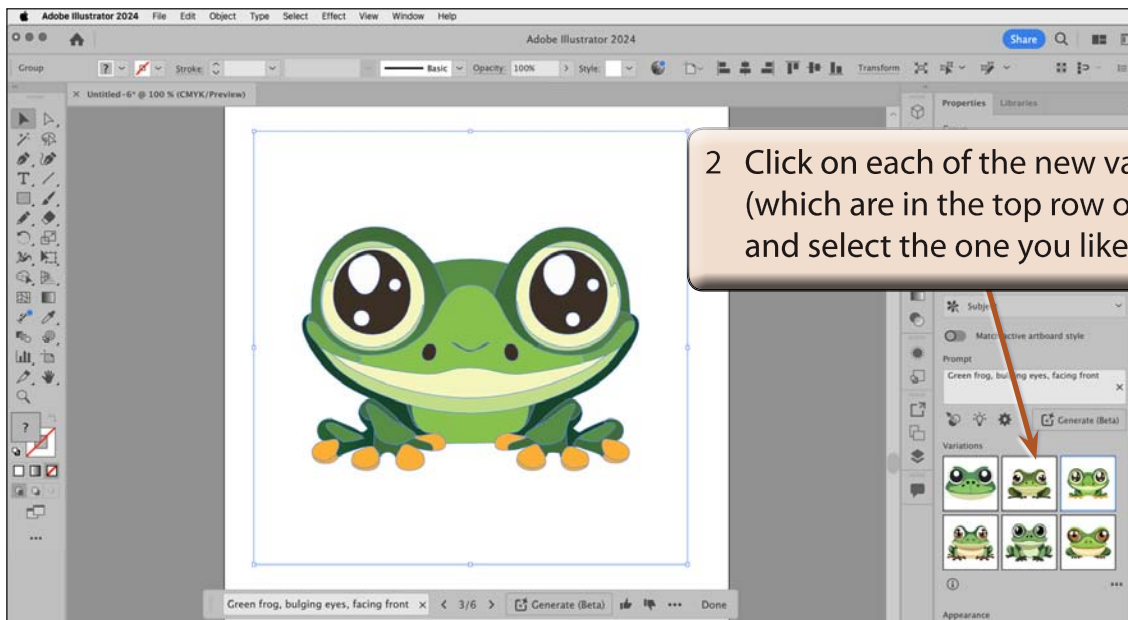
B Generating Extra Variations

The first 3 provided variations of an image may not be the most suitable. You can continue to generate images until you obtain the one that suits your needs.



- 1 In the GENERATE CONTEXTUAL TASK BAR click on the GENERATE (BETA) button to generate 3 more frog images.

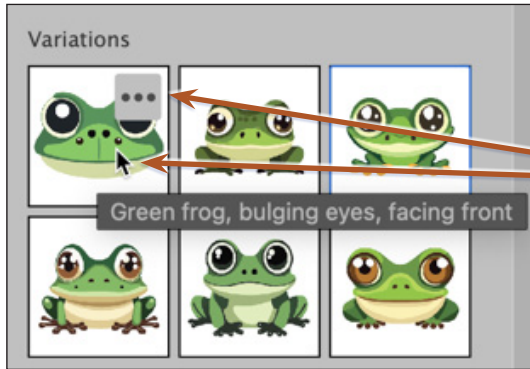
NOTE: It is personal preference whether you use the **GENERATE CONTEXTUAL TASK BAR** or the **PROPERTIES** panel when creating text to vector graphic images.



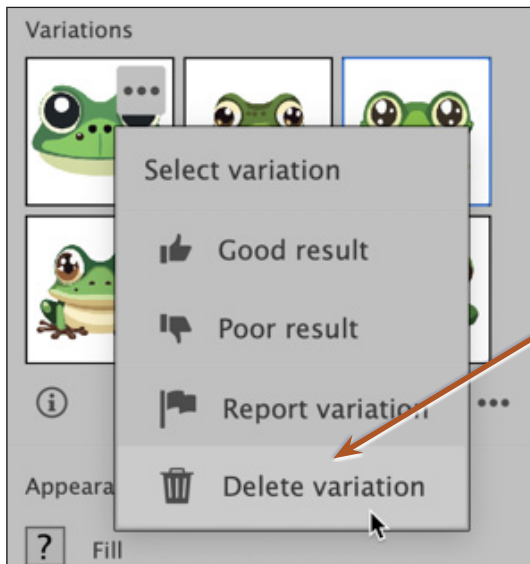
- 2 Click on each of the new variations (which are in the top row of images) and select the one you like.

C Deleting Unwanted Images

Once you have selected the image you want to use, the unwanted ones can be deleted so that your PROPERTIES panel is not filled with variations of the same image.



1 In the PROPERTIES panel hover over an unwanted variation and click on its MORE icon (...).



2 In the drop down menu select DELETE VARIATION to remove the image.

3 Delete any other unwanted variations of the frog.

NOTE: You can also use the MORE icon (...) to label a variation as a good result or a bad result.