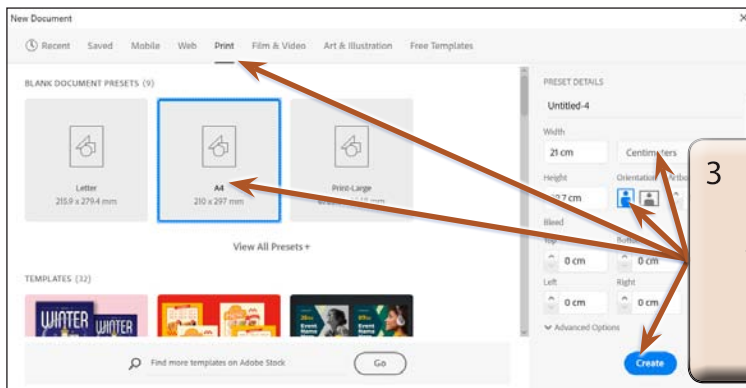


Distorting Shapes

Shapes such as drawings, images, symbols and text can be distorted to create unique and distinctive designs. In this chapter you will use the FREE TRANSFORM TOOL, the LIQUIFY tools and the PUPPET WARP TOOL to distort shapes.

Starting a New Document

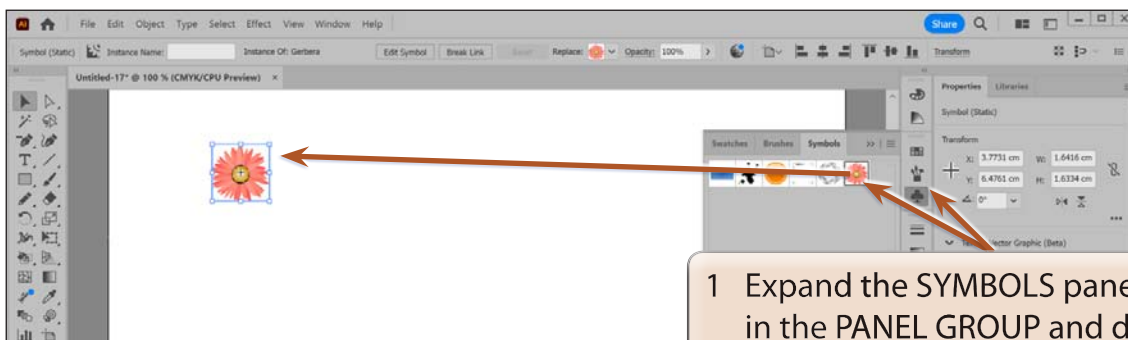
- 1 Load Adobe Illustrator or close the current document.
- 2 Select NEW FILE from the WELCOME screen or NEW from the FILE menu to start a new document.



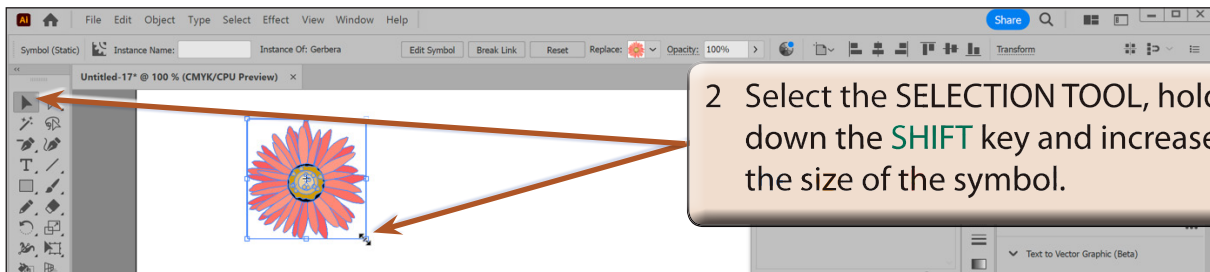
- 3 Select the PRINT profile followed by the A4 preset (or the paper size your printer uses), set the UNITS to CENTIMETRES, the ORIENTATION to PORTRAIT and select CREATE.

Inserting a Symbol

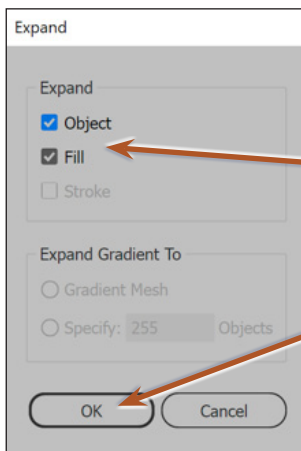
A symbol will be used as the image.



- 1 Expand the SYMBOLS panel in the PANEL GROUP and drag the GERBERA symbol on to the Artboard.

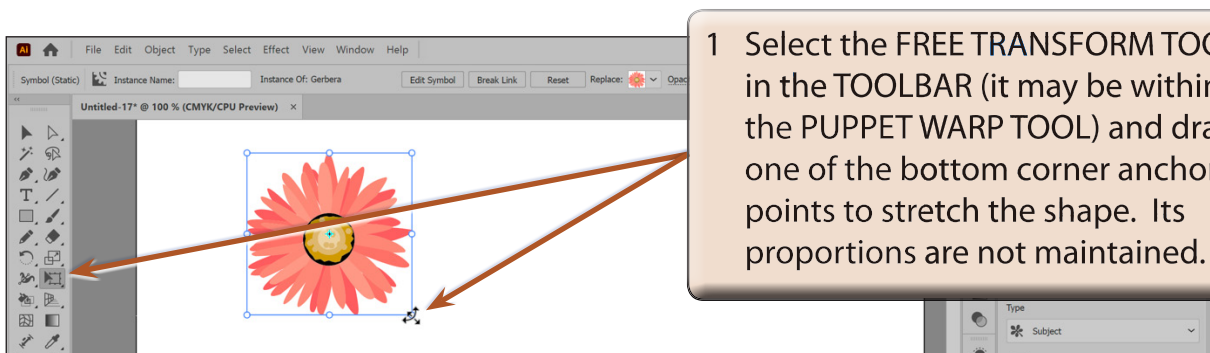


- 3 The symbol needs to be expanded so that its individual parts can be modified.
- 4 Display the OBJECT menu and select EXPAND.

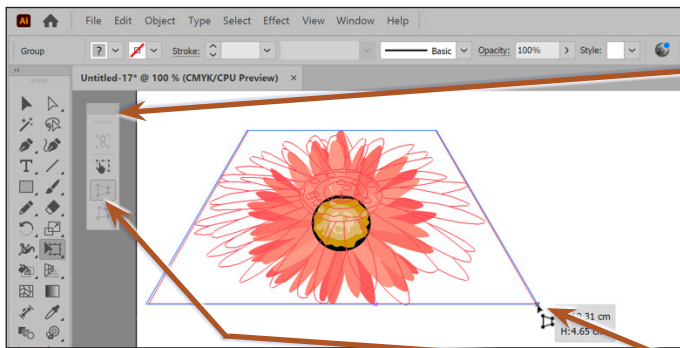


Distorting Using the Free Transform Tool

A simple way to distort shapes is to use the FREE TRANSFORM TOOL.



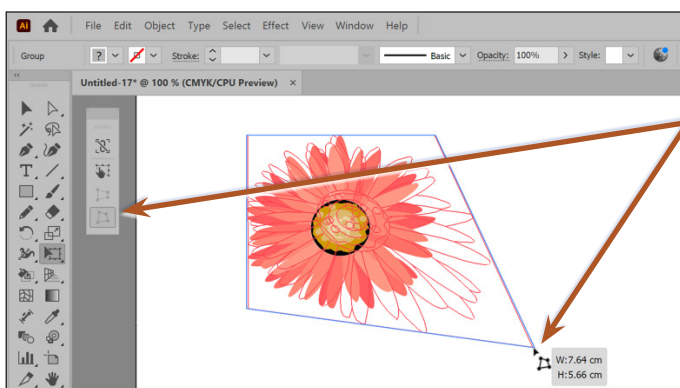
- 2 Press **CTRL+Z** or **COMMAND+Z** to undo the change.



3 The FREE TRANSFORM WIDGET panel is opened when you select an object with the FREE TRANSFORM TOOL.

4 Click on the PERSPECTIVE DISTORT option and drag a lower anchor point. Just one side of the image is distorted.

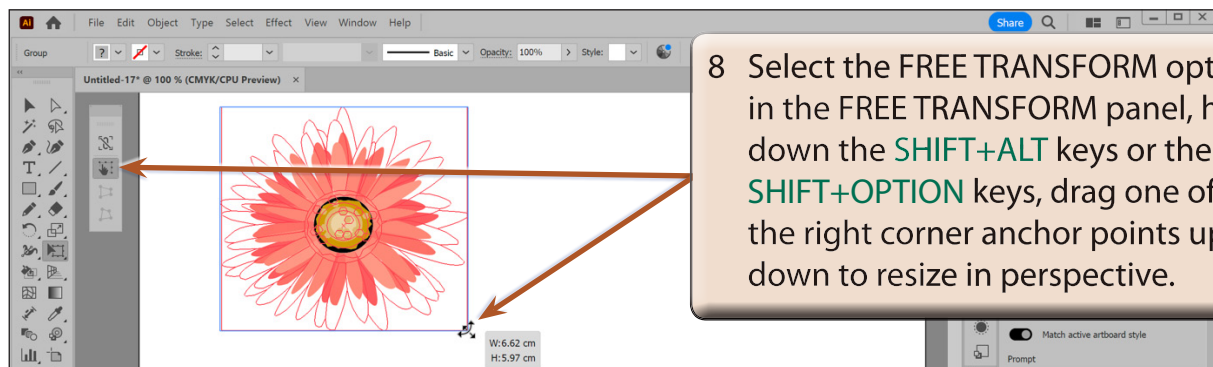
- 5 Press **CTRL+Z** or **COMMAND+Z** to undo the change.



6 Click on the FREE DISTORT option in the FREE TRANSFORM WIDGET panel and drag a anchor point. Just the selected corner of the image is distorted.

NOTE: The top icon in the FREE TRANSFORM WIDGET panel is the **CONSTRAIN TOOL**. It can be selected with the FREE TRANSFORM TOOL or the FREE DISTORT TOOL to maintain the proportions of the resize. It is the same as holding down the **SHIFT** key when resizing an object.

- 7 Press **CTRL+Z** or **COMMAND+Z** to undo the change.



- 9 Press **CTRL+Z** or **COMMAND+Z** to undo the change.

Distorting Using the Liquify Tools

The LIQUIFY tools allow for more detailed distortions. These include warping, twirling, compressing, bloating and adjusting edges.

A The Warp Tool

The WARP TOOL allows you to push or stretch part of a shape. To use the tool on a symbol, the link to the symbol needs to be broken.

- 1 Use the SELECTION TOOL to delete the current symbol from the Artboard.

