

Chapter 7

Text Effects

You can create a variety of different text effects using Flash. This ranges from standard text formatting through to detailed text animation. The PROPERTIES INSPECTOR has all the text formatting options.

Device Fonts

When using text within Flash you have all the fonts in the computer's system available to you. However, those fonts may not be available on the user's computer. Therefore, it is advisable to use DEVICE FONTS when formatting text within Flash. DEVICE FONTS will instruct FLASH to select a font from a similar font family on the users computer to the one you used in the Flash movie.

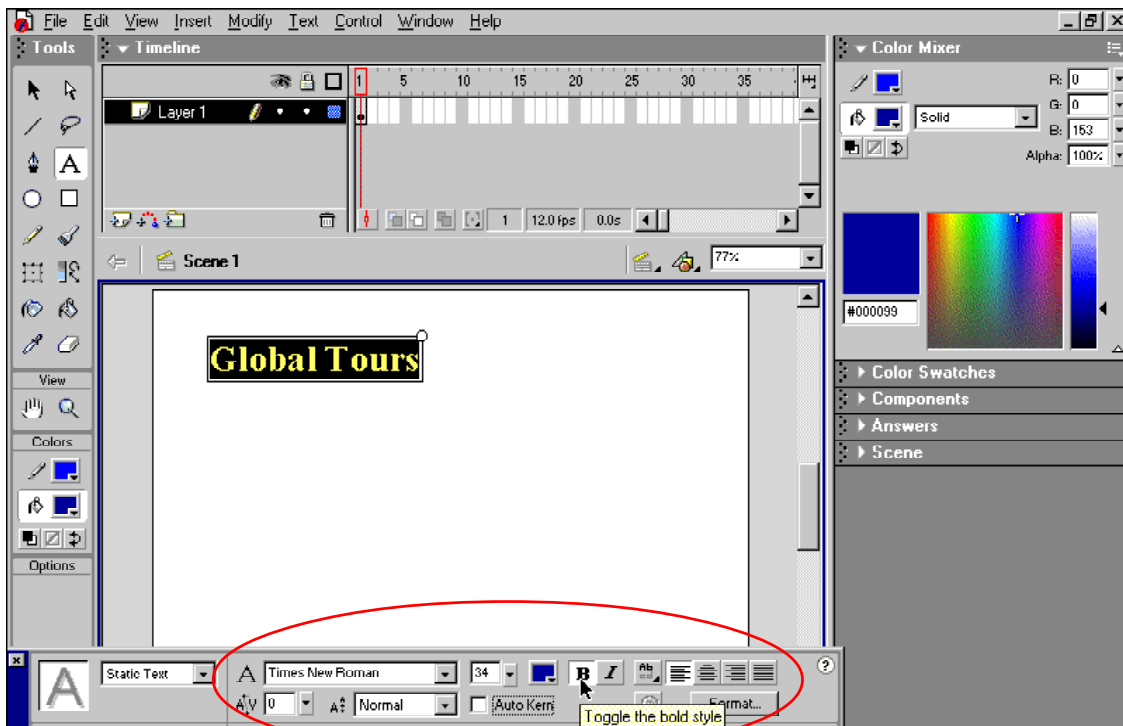
For example:

The SANS SERIF font family includes Ariel, Helvetica, Verada.

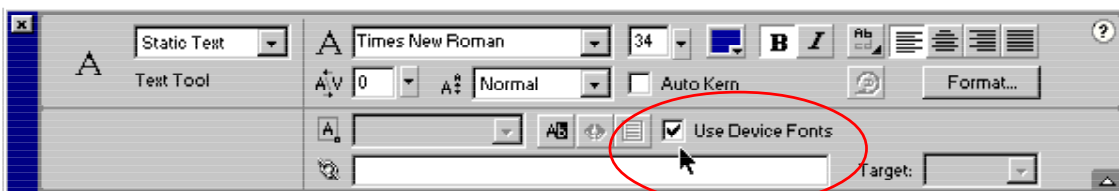
The SERIF font family includes Times, Times New Roman, Century Schoolbook.

Unlike regular fonts DEVICE FONTS are not embedded in the movie, therefore the movie will take up less space.

- 1 Load Flash MX or close the current file and start a NEW file.
- 2 Select the TEXT tool, click the *I-Beam* near the top left of the stage and enter:
Global Tours
- 3 Highlight the text by dragging the *I-Beam* over it. In the PROPERTIES INSPECTOR set the FONT to TIMES (NEW ROMAN), the SIZE to 34 point, the TEXT COLOUR to BLUE and the STYLE to BOLD. Refer to the diagram at the top of the next page.



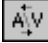
- 4 In the PROPERTIES INSPECTOR turn on USE DEVICE FONTS.

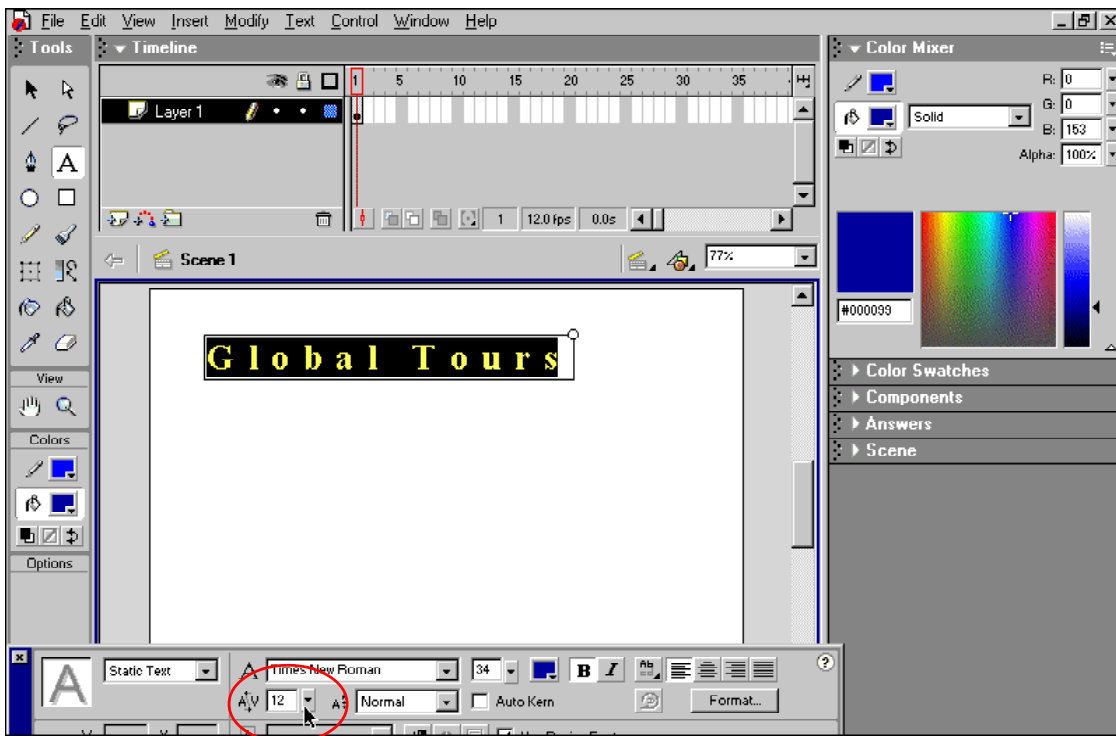


- 5 When you export a movie with DEVICE FONTS selected it looks to see if the fonts used are on the user's computer. If a font is not present it substitutes it with a similar font from the user's computer.

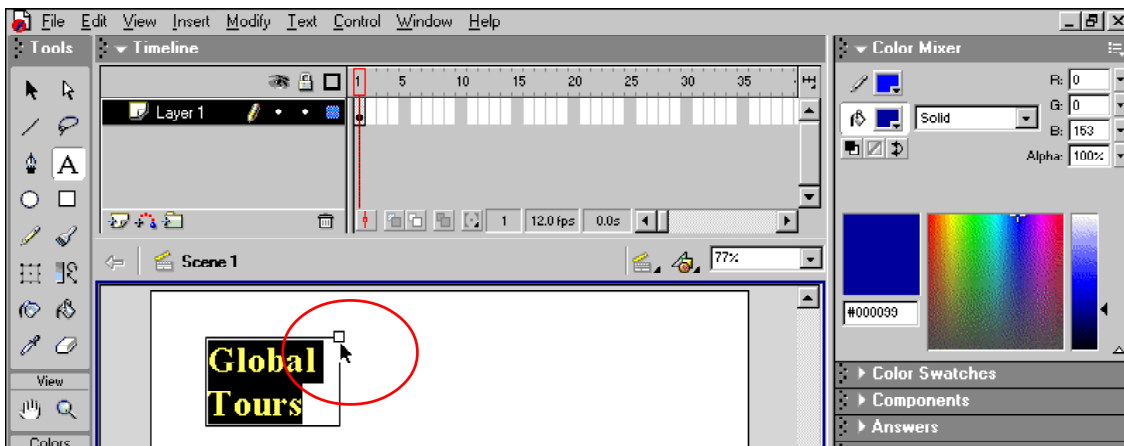
Character Spacing

You can control the character spacing in all the text or just on selected letters.

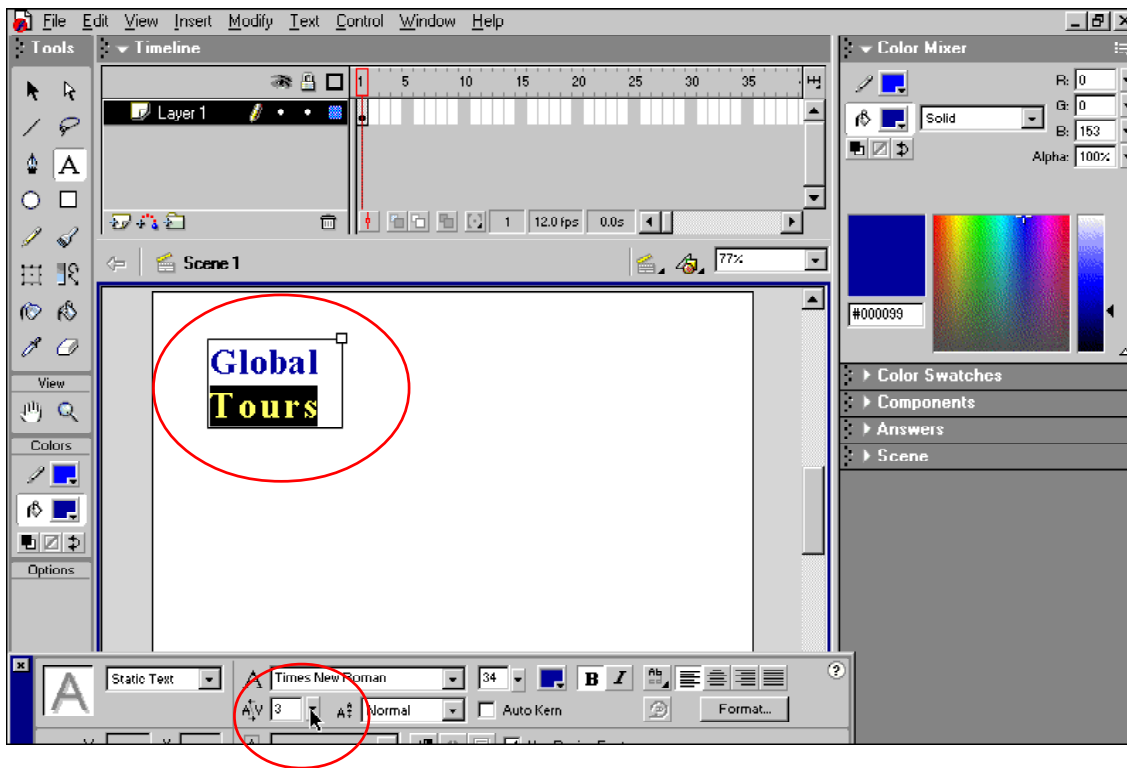
- 1 Highlight all the text.
- 2 In the PROPERTIES INSPECTOR set the CHARACTER SPACING box  to 12 pixels and all the letters in the text will be spaced out as shown in the diagram at the top of the next page.



- 3 Return the CHARACTER SPACING to 0.
- 4 Use the EDIT 'handle' at the top right corner of the text box to reduce the width of the text box so that the words are displayed on two lines.




- 5 Highlight just the word TOURS (you can double click on a word to quickly highlight it).
- 6 Use the PROPERTIES INSPECTOR to increase the CHARACTER SPACING to about 3 pixels so that the word TOURS is the same width as the word GLOBAL. Refer to the diagram at the top of the next page



Selectable Text

You can allow text from a Flash file to be copied and pasted within a web site. This might be useful if you are providing information on a web site that others may wish to use. Only a whole text box can be made selectable, not individual words.

- 1 Click the *I-Beam* in the GLOBAL TOURS text box.
- 2 In the PROPERTIES INSPECTOR click on the SELECTABLE button  to enable the text to be selected. Refer to the diagram at the top of the next page.