

## Enhancing Web Pages

DreamWeaver offers a number of ways to improve the appearance of web pages. In this chapter you will look at the use of Navigation Bars, Flash Text and Flash Buttons.

### Setting a Navigation Bar

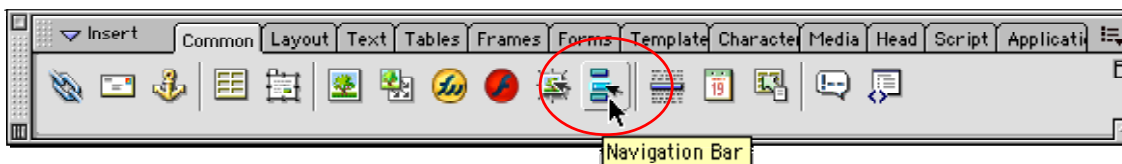
Placing buttons in a library is fine for simple buttons, but there are times when you want a button to change its appearance when the *pointer* is moved over it and change again when the mouse button is clicked. The later highlights which page is currently displayed on the screen. To achieve this a NAVIGATION BAR can be inserted.

- 1 Load DreamWeaver and open the eTRAVEL.HTML frameset.
- 2 Delete the links from the CONTENTS frame.
- 3 Position the *cursor* at the top of the CONTENTS frame.



### A Inserting the Navigation Bar

- 1 Click on the NAVIGATION BAR button in the COMMON tools of the INSERT BAR.



- 2 Read through the sections of the INSERT NAVIGATION BAR dialogue box. We will insert three different buttons for each link. One when the button is not selected (UP IMAGE), another when the *pointer* moves over the image (OVER IMAGE) and a third button when the button is clicked (DOWN IMAGE). There will be six ELEMENTS of the NAVIGATION BAR (HOME, PACKAGES, TRAVEL TIPS, TOURS, ORDERS and AIRLINES) each with a set of three buttons.

## B Inserting the Home Buttons

These instructions will describe how to open the open each button and save them in a NAV BAR BUTTON folder within your IMAGES folder. However, you can speed the process up by copying the buttons directly from the CHAPTER 8 folder of the DW SUPPORT FILES into a NAV BAR BUTTONS folder in your IMAGES folder.

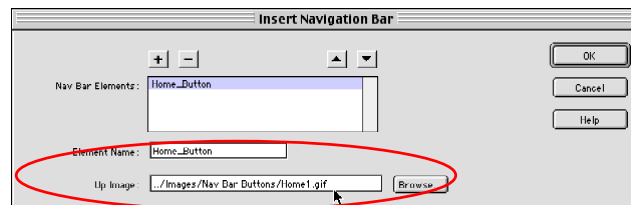
- 1 In the ELEMENT NAME box enter:

Home\_Button

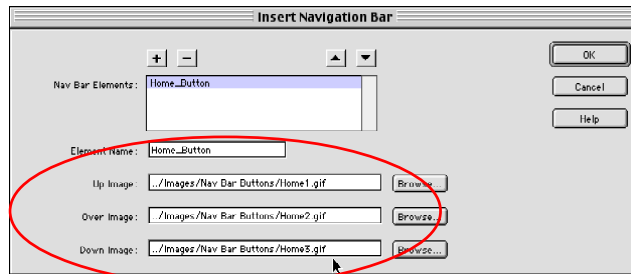
- 2 Click on the BROWSE button next to the UP IMAGE box. Access the DW SUPPORT FILES, open the CHAPTER 8 folder and double click on the HOME1.GIF button. Select YES to the ROOT FOLDER warning.
- 3 Open the IMAGES folder of your eTRAVEL folder and create a NEW FOLDER called:

NAV BAR BUTTONS

- 4 Save the button in the new folder and the path of the button should be inserted in the UP IMAGE box.



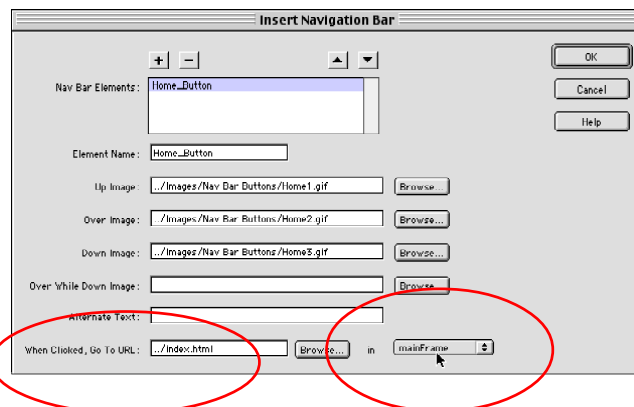
- 5 Click on the BROWSE button next to the OVER IMAGE box and repeat step 2 to insert the HOME2.GIF button, saving it in the NAV BAR BUTTONS folder.



- 6 Click on the BROWSE button next to the DOWN IMAGE box and repeat step 2 to insert the HOME3.GIF button, saving it in the NAV BAR BUTTONS folder.

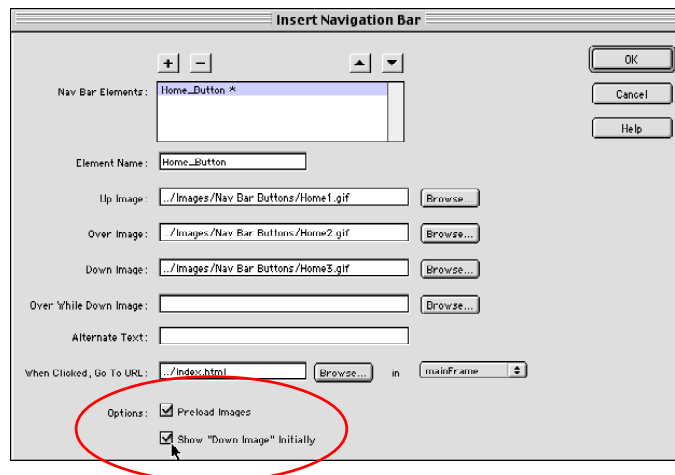
**NB: A button that changes when the mouse button is held down could have also been added.**

- 7 Click on the BROWSE button next to the WHEN CLICKED, GO TO URL box. Access your eTRAVEL folder and double click on the INDEX.HTML file.



- 8 Set the IN box to the right of the WHEN CLICKED, GO TO URL box to MAIN FRAME. This is the TARGET box.

- 9 This is the HOME button and when the site opens the HOME page will be displayed in the PAGE FRAME. Therefore, we can set the HOME button to be in the DOWN position when the page is first opened. Click on the SHOW 'DOWN IMAGE' INITIALLY check box.

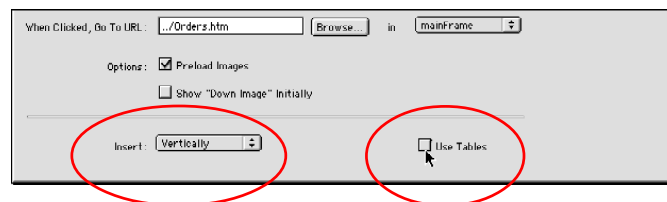


- NB:**
- i An \* is added to the ELEMENT NAME to indicate that it will be displaying the DOWN IMAGE button.
  - ii At the bottom of the dialogue box the PRELOAD IMAGES box should be on. This means navigation bar buttons will be loaded when the page is loaded, rather than when someone clicks on the button.

## C Setting the Navigation Bar Direction

Navigation Bars can be displayed vertically or horizontally. In this case we will need to navigation bar to be displayed vertically down the CONTENTS frame. You also have a choice of placing the navigation bar in a table if you want to separate the buttons more fully or add borders between them.

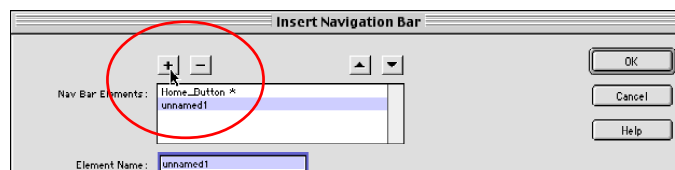
- At the base of the INSERT NAVIGATION BAR dialogue box, set the INSERT box to VERTICALLY



- Turn off the USE TABLE option.

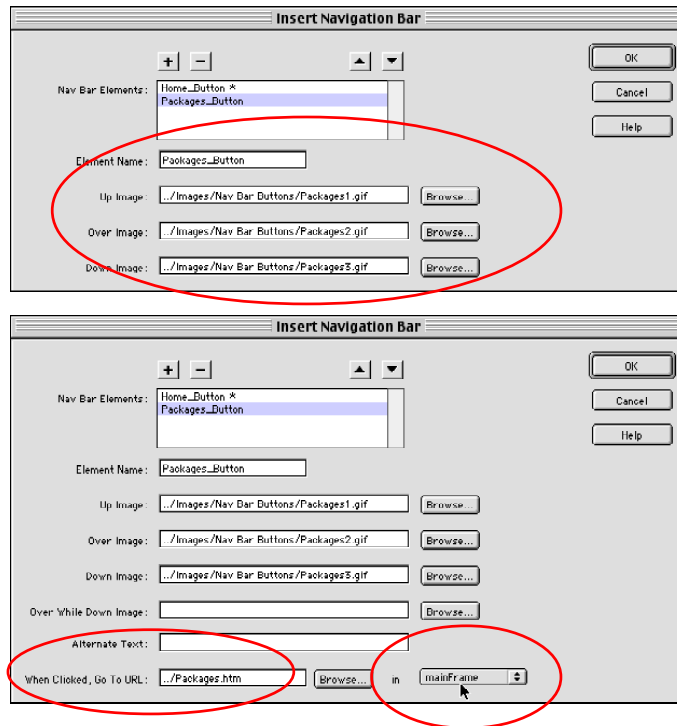
## D inserting the Packages Buttons

- Click on the ADD ELEMENT button (+) at the top of the dialogue box and a new element will be provided.
- In the ELEMENT NAME box enter:



Packages\_Button

- 3 Click on the BROWSE button next to the UP IMAGE box. Access the DW SUPPORT FILES, open the CHAPTER 8 folder and double click on the PACKAGES1.GIF button. Select YES to the ROOT FOLDER warning and save the button in the NAV BAR BUTTONS folder within your IMAGES folder.
- 4 The path of the button should be inserted in the UP IMAGE box.
- 5 Repeat step 3 to insert the PACKAGES2.GIF button in the OVER IMAGE box and PACKAGES3.GIF button in the DOWN IMAGE box.
- 6 Click on the BROWSE button next to the WHEN CLICKED, GO TO URL box. Access your eTRAVEL folder and double click on the PACKAGES.HTML file.
- 7 Set the IN (or TARGET) box to MAIN FRAME.



## € Inserting the Travel Tips Buttons

- 1 Click on the ADD ELEMENT button (+) at the top of the dialogue box to add a new element and in the ELEMENT NAME box enter:

Travel\_Tips\_Button

- 2 Repeat steps 3 to 7 from the previous section to insert the buttons TRAVEL1.GIF, TRAVEL2.GIF and TRAVEL3.GIF then link the buttons to the TIPS.HTML page and set the TARGET to MAIN FRAME.

