

Creating Commands

DreamWeaver allows you save steps that you have carried out. It is a very similar process to creating macros or scripts in other programs such as Microsoft Excel, Microsoft Access or FileMaker Pro. Creating commands helps you to ensure consistency throughout a site and frequently used steps can be automated.

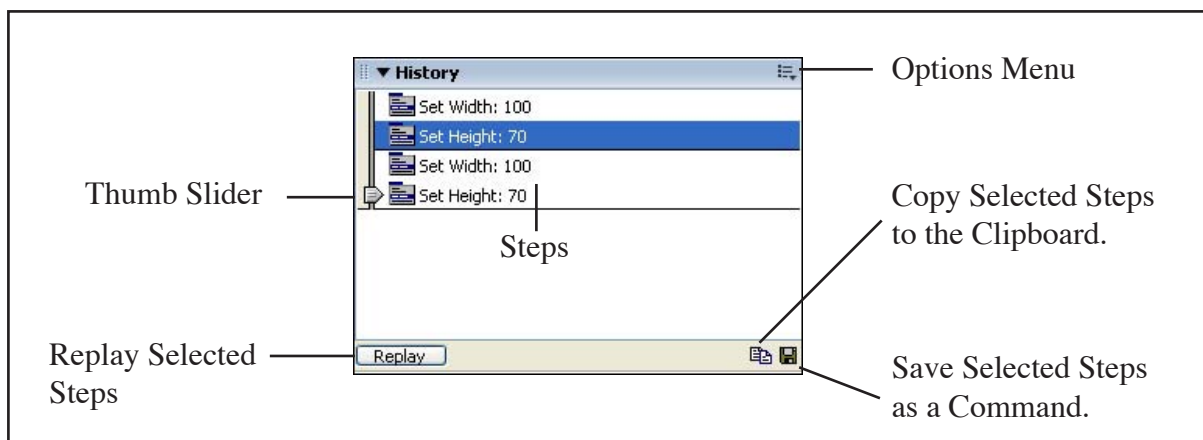
The HISTORY panel is used to view the steps you create then selected commands are stored in the COMMANDS menu. To illustrate the command setting process we will create a standard table format and a command to set images to a particular size.

Creating a Table Command

You can create a table command that stores the width of the table, the font to be used, the border setting, cell padding and cell spacing settings, etc. Once the table is inserted into other pages throughout the site the PROPERTIES INSPECTOR can be used to alter the number of rows and columns required. All the other settings will be provided by the TABLE command

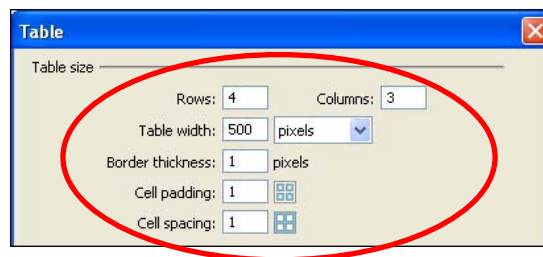
A Inserting the Table

- 1 Load DreamWeaver or close the current page and start a new BASIC HTML PAGE.
- 2 Set the FILES panel to your eTRAVEL site.
- 3 Display the WINDOW menu, highlight OTHERS and select HISTORY to open the HISTORY panel. It will display each of the steps as you carry them out. The HISTORY panel has the following sections.

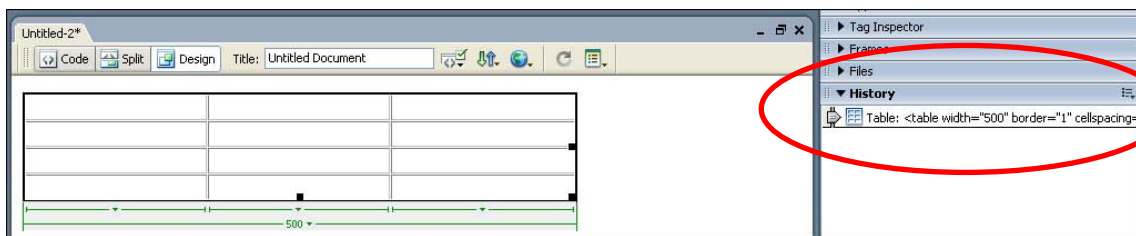


- 4 Select the TABLE button in the COMMON tab of the INSERT BAR to start the table.

- Set the ROWS to 4, the COLUMNS to 3, WIDTH to 500 pixels, the BORDER THICKNESS to 1, the CELL PADDING to 1 and the CELL SPACING to 1.



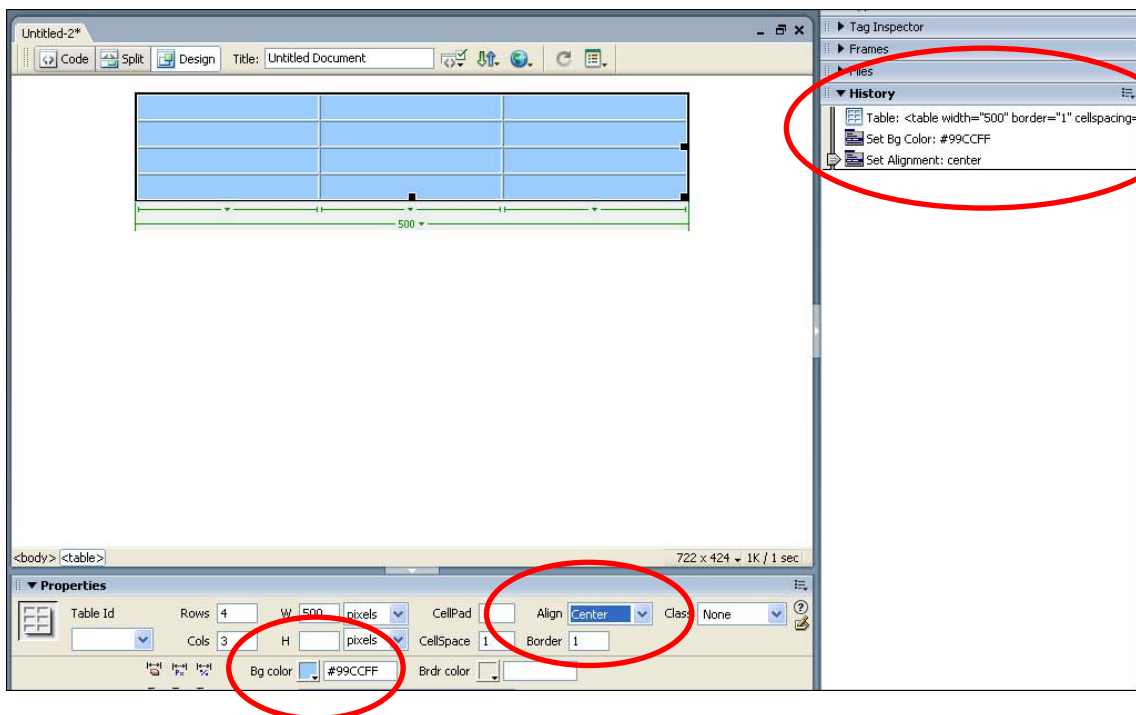
- Select OK and the table should be inserted on the page and its step added to the HISTORY panel. Notice that part of the table format is included in the step.



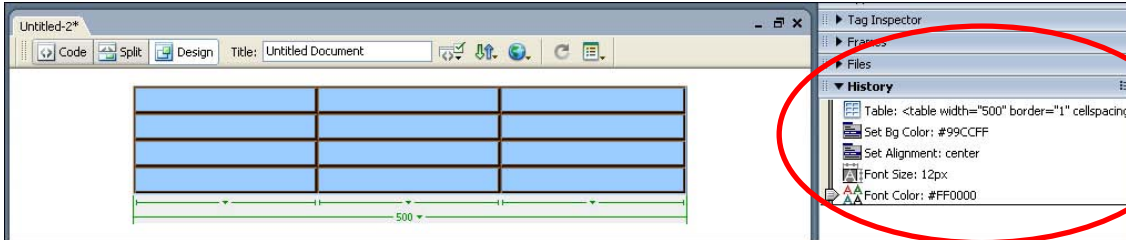
B Formatting the Table

Some table formats can be added to the commands.

- In the PROPERTIES INSPECTOR set the BG COLOUR to LIGHT BLUE and the ALIGN to CENTRE. Again, these steps should be added to the HISTORY panel.

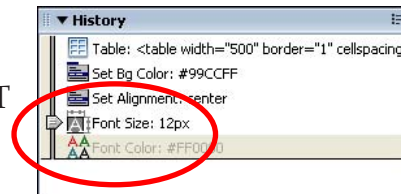


- Highlight the cells of the table by dragging the *pointer* from the top left cell to the bottom right cell and in the PROPERTIES INSPECTOR set the FONT SIZE to 12 pixels and the TEXT COLOUR to RED.



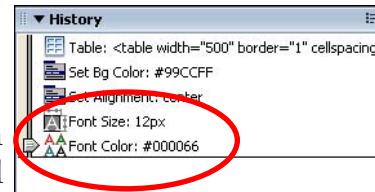
- If you make a mistake when setting steps in the HISTORY panel you can delete the incorrect step. Let's say we want the text colour in the table to be DARK BLUE rather than RED.

- In the HISTORY panel move the THUMB SLIDER over the previous correct step (FONT SIZE). The FONT COLOUR step should be shaded.



- In the PROPERTIES INSPECTOR set the TEXT Colour to DARK BLUE and this step should replace the FONT COLOUR to RED step.

- Try moving the THUMB SLIDER up and down the steps in the HISTORY panel. The steps will be undone or redone on screen as you do.



- Return the THUMB SLIDER to the last step.

C Saving the Table Command

The steps can now be saved so that the table can be inserted into other pages.

- SHIFT+CLICK on all the steps in the HISTORY panel so that all of them are highlighted.

NB: If you only wanted some steps to be included in the command, just the required steps would be highlighted.

- Click on the SAVE SELECTED STEPS AS A COMMAND button at the base of the HISTORY panel and you will be asked to give the command a name. Enter:

Table

- Select OK to set the command.

